

Journal of Veterinary Medicine and Animal Health

Volume 5 Number 4 April 2013



*Academic
Journals*

ABOUT JVMAH

The **Journal of Veterinary Medicine and Animal Health (JVMAH)** is published monthly (one volume per year) by Academic Journals.

The **Journal of Veterinary Medicine and Animal Health (JVMAH)** is an open access journal that provides rapid publication (monthly) of articles in all areas of the subject like the application of medical, surgical, public health, dental, diagnostic and therapeutic principles to non-human animals.

The Journal welcomes the submission of manuscripts that meet the general criteria of significance and scientific excellence. Papers will be published shortly after acceptance. All articles published in JVMAH are peer-reviewed.

Submission of Manuscript

Submit manuscripts as e-mail attachment to the Editorial Office at: jvmah@academicjournals.org. A manuscript number will be mailed to the corresponding author shortly after submission.

The Journal of Veterinary Medicine and Animal Health (JVMAH) will only accept manuscripts submitted as e-mail attachments.

Please read the **Instructions for Authors** before submitting your manuscript. The manuscript files should be given the last name of the first author.

Editors

Fuqiang Li PhD

Division of Cardiology
Department of Medicine
Cedars-Sinai Medical Center
8700 Beverly Blvd
CA 90048
USA

Dr. Lachhman Das Singla

Department of Veterinary Parasitology
College of Veterinary Science
Guru Angad Dev Veterinary and Animal Sciences University
Ludhiana-141004
Punjab
India

Dr. Viktor Jurkovich

Szent István University,
Faculty of Veterinary Science,
István utca 2. H-1078 Budapest
Hungary

Dr. Sathurkulasingam Reuben Shanthikumar

606 Alvarado Avenue
Apt # 64, Davis, CA 95616
USA

Dr. Adeolu Alex Adedapo

Department of Veterinary Physiology
Biochemistry and Pharmacology
University of Ibadan
Nigeria

Prof. Anca Mihaly Cozmuta

Faculty of Sciences
North University of Baia Mare
Romania, Victoriei Str. 76 A, Baia Mare
Romania

Dr. Ramasamy Harikrishnan

Faculty of Marine Science
College of Ocean Sciences
Jeju National University
Jeju city
Jeju 690 756
South Korea

Instructions for Author

Electronic submission of manuscripts is strongly encouraged, provided that the text, tables, and figures are included in a single Microsoft Word file (preferably in Arial font).

The **cover letter** should include the corresponding author's full address and telephone/fax numbers and should be in an e-mail message sent to the Editor, with the file, whose name should begin with the first author's surname, as an attachment.

Article Types

Three types of manuscripts may be submitted:

Regular articles: These should describe new and carefully confirmed findings, and experimental procedures should be given in sufficient detail for others to verify the work. The length of a full paper should be the minimum required to describe and interpret the work clearly.

Short Communications: A Short Communication is suitable for recording the results of complete small investigations or giving details of new models or hypotheses, innovative methods, techniques or apparatus. The style of main sections need not conform to that of full-length papers. Short communications are 2 to 4 printed pages (about 6 to 12 manuscript pages) in length.

Reviews: Submissions of reviews and perspectives covering topics of current interest are welcome and encouraged. Reviews should be concise and no longer than 4-6 printed pages (about 12 to 18 manuscript pages). Reviews are also peer-reviewed.

Review Process

All manuscripts are reviewed by an editor and members of the Editorial Board or qualified outside reviewers. Authors cannot nominate reviewers. Only reviewers randomly selected from our database with specialization in the subject area will be contacted to evaluate the manuscripts. The process will be blind review.

Decisions will be made as rapidly as possible, and the journal strives to return reviewers' comments to authors as fast as possible. The editorial board will re-review manuscripts that are accepted pending revision. It is the goal of the JPP to publish manuscripts within weeks after submission.

Regular articles

All portions of the manuscript must be typed double-spaced and all pages numbered starting from the title page.

The **Title** should be a brief phrase describing the contents of the paper. The Title Page should include the authors' full names and affiliations, the name of the corresponding author along with phone, fax and E-mail information. Present addresses of authors should appear as a footnote.

The **Abstract** should be informative and completely self-explanatory, briefly present the topic, state the scope of the experiments, indicate significant data, and point out major findings and conclusions. The Abstract should be 100 to 200 words in length. Complete sentences, active verbs, and the third person should be used, and the abstract should be written in the past tense. Standard nomenclature should be used and abbreviations should be avoided. No literature should be cited.

Following the abstract, about 3 to 10 key words that will provide indexing references should be listed.

A list of non-standard **Abbreviations** should be added. In general, non-standard abbreviations should be used only when the full term is very long and used often. Each abbreviation should be spelled out and introduced in parentheses the first time it is used in the text. Only recommended SI units should be used. Authors should use the solidus presentation (mg/ml). Standard abbreviations (such as ATP and DNA) need not be defined.

The **Introduction** should provide a clear statement of the problem, the relevant literature on the subject, and the proposed approach or solution. It should be understandable to colleagues from a broad range of scientific disciplines.

Materials and methods should be complete enough to allow experiments to be reproduced. However, only truly new procedures should be described in detail; previously published procedures should be cited, and important modifications of published procedures should be mentioned briefly. Capitalize trade names and include the manufacturer's name and address. Subheadings should be used. Methods in general use need not be described in detail.

Results should be presented with clarity and precision. The results should be written in the past tense when describing findings in the authors' experiments. Previously published findings should be written in the present tense. Results should be explained, but largely without referring to the literature. Discussion, speculation and detailed interpretation of data should not be included in the Results but should be put into the Discussion section.

The Discussion should interpret the findings in view of the results obtained in this and in past studies on this topic. State the conclusions in a few sentences at the end of the paper. The Results and Discussion sections can include subheadings, and when appropriate, both sections can be combined.

The Acknowledgments of people, grants, funds, etc should be brief.

Tables should be kept to a minimum and be designed to be as simple as possible. Tables are to be typed double-spaced throughout, including headings and footnotes. Each table should be on a separate page, numbered consecutively in Arabic numerals and supplied with a heading and a legend. Tables should be self-explanatory without reference to the text. The details of the methods used in the experiments should preferably be described in the legend instead of in the text. The same data should not be presented in both table and graph form or repeated in the text.

Figure legends should be typed in numerical order on a separate sheet. Graphics should be prepared using applications capable of generating high resolution GIF, TIFF, JPEG or Powerpoint before pasting in the Microsoft Word manuscript file. Tables should be prepared in Microsoft Word. Use Arabic numerals to designate figures and upper case letters for their parts (Figure 1). Begin each legend with a title and include sufficient description so that the figure is understandable without reading the text of the manuscript. Information given in legends should not be repeated in the text.

References: In the text, a reference identified by means of an author's name should be followed by the date of the reference in parentheses. When there are more than two authors, only the first author's name should be mentioned, followed by 'et al'. In the event that an author cited has had two or more works published during the same year, the reference, both in the text and in the reference list, should be identified by a lower case letter like 'a' and 'b' after the date to distinguish the works.

Examples:

Cole (2000), Steddy et al. (2003), (Kelebeni, 1983), (Bane and Jake, 1992), (Chege, 1998; Cohen, 1987a,b;Tristan, 1993,1995), (Kumasi et al., 2001)

References should be listed at the end of the paper in alphabetical order. Articles in preparation or articles submitted for publication, unpublished observations, personal communications, etc. should not be included

in the reference list but should only be mentioned in the article text (e.g., A. Kingori, University of Nairobi, Kenya, personal communication). Journal names are abbreviated according to Chemical Abstracts. Authors are fully responsible for the accuracy of the references.

Examples:

Ansell J, Hirsh J, Poller L (2004). The pharmacology and management of the vitamin K antagonists: the Seventh ACCP Conference on Antithrombotic and Thrombolytic. Therapy. 126:204-233

Ansell JE, Buttaro ML, Thomas VO (1997). Consensus guidelines for coordinated outpatient oral anti coagulation therapy management. Ann. Pharmacother. 31:604-615

Charnley AK (1992). Mechanisms of fungal pathogenesis in insects with particular reference to locusts. In: Lomer CJ, Prior C (eds), Pharmaceutical Controls of Locusts and Grasshoppers: Proceedings of an international workshop held at Cotonou, Benin. Oxford: CAB International. pp 181-190.

Jake OO (2002). Pharmaceutical Interactions between *Striga hermonthica* (Del.) Benth. and fluorescent rhizosphere bacteria Of *Zea mays*, L. and *Sorghum bicolor* L. Moench for Striga suicidal germination In *Vigna unguiculata*. PhD dissertation, Tehran University, Iran.

Furmaga EM (1993). Pharmacist management of a hyperlipidemia clinic. Am. J. Hosp. Pharm. 50: 91-95

Short Communications

Short Communications are limited to a maximum of two figures and one table. They should present a complete study that is more limited in scope than is found in full-length papers. The items of manuscript preparation listed above apply to Short Communications with the following differences:

(1) Abstracts are limited to 100 words; (2) instead of a separate Materials and Methods section, experimental procedures may be incorporated into Figure Legends and Table footnotes; (3) Results and Discussion should be combined into a single section.

Proofs and Reprints: Electronic proofs will be sent (e-mail attachment) to the corresponding author as a PDF file. Page proofs are considered to be the final version of the manuscript. With the exception of typographical or minor clerical errors, no changes will be made in the manuscript at the proof stage.

Fees and Charges: Authors are required to pay a \$550 handling fee. Publication of an article in the Journal of Veterinary Medicine and Animal Health (JVMAH) is not contingent upon the author's ability to pay the charges. Neither is acceptance to pay the handling fee a guarantee that the paper will be accepted for publication. Authors may still request (in advance) that the editorial office waive some of the handling fee under special circumstances.

Copyright: © 2013, Academic Journals.

All rights Reserved. In accessing this journal, you agree that you will access the contents for your own personal use but not for any commercial use. Any use and or copies of this Journal in whole or in part must include the customary bibliographic citation, including author attribution, date and article title.

Submission of a manuscript implies: that the work described has not been published before (except in the form of an abstract or as part of a published lecture, or thesis) that it is not under consideration for publication elsewhere; that if and when the manuscript is accepted for publication, the authors agree to automatic transfer of the copyright to the publisher.

Disclaimer of Warranties

In no event shall Academic Journals be liable for any special, incidental, indirect, or consequential damages of any kind arising out of or in connection with the use of the articles or other material derived from the JVMAH, whether or not advised of the possibility of damage, and on any theory of liability.

This publication is provided "as is" without warranty of any kind, either expressed or implied, including, but not limited to, the implied warranties of merchantability, fitness for a particular purpose, or non-infringement. Descriptions of, or references to, products or publications does not imply endorsement of that product or publication. While every effort is made by Academic Journals to see that no inaccurate or misleading data, opinion or statements appear in this publication, they wish to make it clear that the data and opinions appearing in the articles and advertisements herein are the responsibility of the contributor or advertiser concerned. Academic Journals makes no warranty of any kind, either express or implied, regarding the quality, accuracy, availability, or validity of the data or information in this publication or of any other publication to which it may be linked.

ARTICLES

Research Articles

- On-farm diagnosis of contagious bovine pleuropneumonia in nomadic herds using latex agglutination test (LAT)** 98
Okaiyeto S. O., Danbirni S., Allam L., Akam E., Pewan S. B., Kudi A. C.
- Histomorphology of the digestive system of red deer (*Cervus elaphus* L.) in Latvia** 106
Inese Zitare, Mara Pilmane, Aleksandrs Jemeljanovs
- Occurrence of ectoparasites and gastro-intestinal helminthes infections in Fayoumi chickens (*Gallus gallus* Fayoumi) in Debre Zeit Agricultural Research Center Poultry Farm, Oromia region, Ethiopia** 112
Yacob Hailu Tolossa, Hagos Ashenafi Tafesse
- Major reproductive disorders of dairy cows in and around Asella town, Central Ethiopia** 117
Hunduma Dinka
- Major prepartum and postpartum reproductive problems of dairy cattle in Central Ethiopia** 123
Angesom Hadush, Adem Abdella, Fikru Regassa

Full Length Research Paper

On-farm diagnosis of contagious bovine pleuropneumonia in nomadic herds using latex agglutination test (LAT)

Okaiyeto S. O.^{1*}, Danbirni S.², Allam L.¹, Akam E.³ Pewan S. B.³ and Kudi A. C.²

¹Veterinary Teaching Hospital, Ahmadu Bello University Zaria, Nigeria.

²Veterinary Surgery and Medicine Ahmadu Bello University, Zaria, Nigeria.

³National Veterinary Research Institute Vom, Nigeria.

Accepted 25 July, 2011

Three outbreaks of contagious bovine pleuropneumonia (CBPP) in Kafur Local Government Area of Katsina State, involving a total of 250 animals were reported. All the animals were examined thoroughly and based on the clinical signs exhibited, 120 (group A, n= 51, B, n=29 and C, n=40) animals were selected for latex agglutination test (LAT), using serum from each of the animal. The results indicate infection rates of 11.8% (6/51) in adult animals and 19.6% (10/51) in calves in farm A, while in farm B the infection rate were 27.6% (6/29) for the adult animals and 13.8% (4/29) for calves. While in farm C, 15.0% (6/40) of the adult animals and 17.5% (7/40) of the calves are positive, as demonstrated by strong (+++) agglutination in cell 1 (Plate 2). Overall infection rate of 16.7 and 17.5% was observed for adult and calves respectively. Although this diagnostic test LAT is not new, this is the first time it's being conducted in the area of study for the diagnosis of CBPP.

Key words: *Mycoplasma mycoides* sub sp. *Mycoides*, nomadic cattle, latex agglutination test.

INTRODUCTION

Contagious bovine pleuropneumonia (CBPP) is a highly contagious disease of cattle caused by *Mycoplasma mycoides* subspecies *mycoides* small colony (MmmSc) (Osiyemi, 1981; Provost et al., 1987; Taylor et al., 1992; Terlaak et al., 1992). The disease is characterized clinically by severe coughing, weakness, emaciation and sometimes by elevated body temperature (Provost et al., 1987; Egwu et al., 1996). Transmission occurs from direct and repeated contacts between sick and healthy animals. The first incidence of the disease in Nigeria was recorded in 1924 when reliable records were first available (Foluso, 2004). As at today the disease is endemic in Nigeria, West, Central, East and parts of

Southern Africa (Tambi et al., 2006). In Nigeria, "alive with the disease" attitude has prevailed in the last few years, farmers hardly report cases but resort to treatment with antibiotics like any other bacteria disease (Chima, 1999, 2001). Inadequate funding of cattle annual mass vaccination program, lack of a rapid on farm screening test to aid sero-monitoring, and refusal of some farmers to allow vaccination of their animals due to post-vaccinal cellulitis, have largely contributed to the spread of the disease rendering data on infection of the disease within the country inaccurate and subjective (Chima, 2001; Molokwu, 2003). Diagnosis of CBPP in most developing countries of Africa is

*Corresponding author. E-mail: sokaiyeto@yahoo.com.

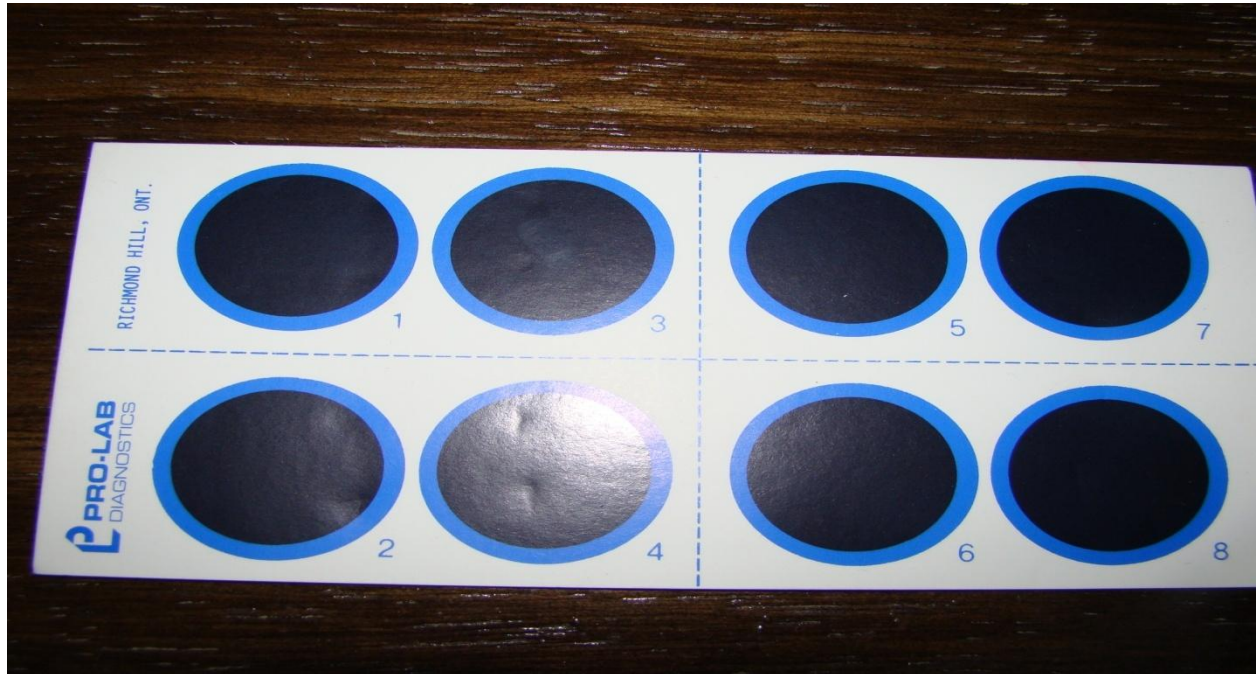


Plate 1. Showing the individual cells for the agglutination.

Presently based on culture and isolation of the causal agent (which is fastidious and slow growing), serology. And post-mortem (PM) examination of lungs of affected animals. Though the complement-fixation test (CFT) is commonly used as a diagnostic method in most CBPP-endemic countries of Africa, its sensitivity in detecting chronically affected animals is low (Provost et al., 1987; Nicholas et al., 1996). The inability of CFT to discriminate between natural and vaccinal exposures in animals has led to a greater reliance on PM examination of lung lesions for monitoring and surveillance of CBPP in Nigeria. The current Office International des Epizooties-prescribed test for the diagnosis of CBPP is the modified CFT (Campbell, A.D., and Turner, 1953; OIE, 2002). Although the test is highly specific, it is relatively expensive to perform, it is slow, and it requires trained personnel and laboratory facilities. In addition, it is less effective at diagnosing animals in the early stages of the disease or of animal with chronic lesions (OIE, 2002). A number of more modern tests have recently been described, including biochemical (Rice et al., 2000), indirect and competitive enzyme-linked immunosorbent assay (ELISA) (Le Goff Thiaucourt, 1998; Nicholas et al., 1996), immunoblotting (Nicholas et al., 1996; Regalla et al., 2000), and PCR (Bashiruddin et al., 1994; Miserez et al., 1997).

Efforts currently being made in Nigeria for the eradication of CBPP involve vaccination backed up with abattoir surveillance. The test and slaughter policy recommended by the Office of Internal Epizootics (OIE) for seropositive animals is currently not practicable because of the cost involved in the payment of

compensation to livestock owners. Presently, in Nigeria, the extent and pattern of CBPP prevalence is largely unknown. The aim of this paper is to report on-field-diagnosis of CBPP using latex agglutination test (LAT). LAT (Developed by Veterinary Laboratories Agency, New Haw, Addlestone, Surrey, KT15 3NB United Kingdom). This test is a rapid test for the diagnosis of CBPP. It has the advantage of not requiring electricity so quite suitable for third world countries. It is believed that this test can be beneficial in determining the extent of CBPP in Nigeria.

MATERIALS AND METHODS

Three herds A, B and C with 99, 58 and 93 Bunaji breeds of cattle respectfully located in Kafur Local Government Area (LGA) of Katsina State, Northern Nigeria were used for these studies following a reported outbreak. One hundred twenty cattle that showed clinical signs similar to CBPP (fever mucopurulent nasal discharge, shallow, grunting respiration, painful coughing, arched back, head extended towards the direction of wind with abducted forelimbs and exercise intolerance) were clinically examined out of a total of 250 cattle in the three herd. Five milliliters of blood were collected from 120 cattle of mixed sex, and placed in a vacutainers without anticoagulant for serum extraction, the separated sera were screened on-farm for the presence of antibodies to *Mycoplasma mycoides* subspecies *mycoides* small colony (MmmSC) using LAT-PA6223 (LAT) as described by Ayling et al. (1999). Plate 1 shows the agglutination slides.

Recording and interpretation of results

Slide test result will be recorded as follows after three minutes:

Table 1. Detection of antibodies to MmmSC in Nomadic Cattle using LAT in Kafur L.G.A., Katsina State.

Herd	Herd size	No. screened	Calves	Adults	No.+ve (Calves%)	No. +ve (Adults%)
20 A	99	51	17	34	10(19.6)	6(11.8)
B	58	29	10	19	4(13.8)	8(27.6)
C	93	40	15	25	7(17.5)	6(15.0)
Total	250	120	42	78	21	

Calves = 3-12 Months, Adults =>12 Months.

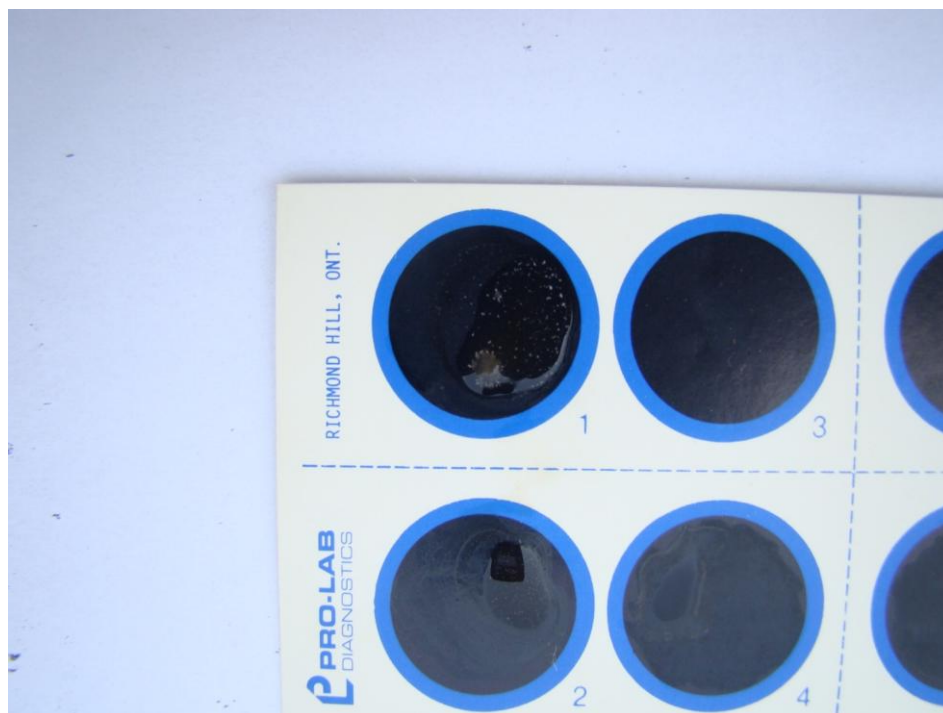


Plate 2. Showing positive (+++) strong clumping of latex beads in cell 1.

- i) Positive (+++). Strong clumping of latex beads. Agglutination should begin within one minute.
- ii) Positive (++) . Clear agglutination of the latex beads. Agglutination should begin within one and two minute.
- iii) Positive (+). Fine agglutination of the latex beads between two and three minutes.
- iv) Negative (-). No agglutination within three minutes (Plate 1).

RESULTS

Fifty one cattle were screened in herd A, made up of 34 adults and 17 calves, 11.8% (6/51) of the Adult animals were positive while 19.6% (10/51) of calves were also positive for contagious bovine pleuropneumonia (CBPP) using LAT. In herd B, a total of 29 cattle, consisting of 19 adult animals and 10 calves were screened for CBPP antigen out of which 27.6% (8/29) adults animals were positive, and 13.8% (4/29) of calves were also positive. In herd C, out of a herd of 40 cattle (25 adult and 15 calves) screened 15.0% (6/40) of the adults were positive and

17.5% (7/40) of the calves tested positive (Table 1). The agglutination observed in cell 1 (Plate 2) is due the fact that when the latex beads coated with capsular polysaccharide purified from *Mycoplasma macoides* subspecies *mycoides* cells are mixed with blood or serum from animal suspected or suffering CBPP, antibodies recognizing the capsular polysaccharide will bind and cross-link the latex particles causing agglutination (Plate 2).

DISCUSSION

M. mycoides subsp. *mycoides* small colony is the etiological agent for a potentially lethal lung disease of cattle called CBPP (Thomson, 2005). The high economic impact of this disease on the cattle industry necessitates the development of rapid, sensitive and specific diagnostic assays. Ayling et al. (1999) developed the LAT for rapid diagnosis of CBPP on the field. The dynamics of

infection of CBPP in herds of cattle in endemic areas appears to be more complicated than would be presumed for a directly transmitted infection with a single host species. In this study an overall infection rates of 16.7% in adults and 17.5% in calves out of 120 animals screened indicates probably a low infection rates for a disease that is transmitted through contact, ingestion and aerosol. This report is at variant with that of McDermott et al. (1987) and Dasho (2001) were they reported serological values of 8.1 to 9.2% infection rates in southern Sudan and Ethiopia. The low values observed in this study could also be attributed to the inability of the test LAT to diagnose convalescent animals, this is partly because high level of circulating capsular polysaccharide antigen can lead to false-negative due to antibody masking effects (March et al., 2003). This study observed a slight increase though not statistically significant ($P < 0.005$) in the susceptibility of calves to CBPP infection over adult, this findings is in agreement with the report of Masiga and Windsor (1978) where they reported that during an epidemic, the morbidity and mortality rates were higher in calves than adult animals, and that where the infection had been present for some time, morbidity was higher in adult animals but mortality was higher in calves. In naïve populations, calves do not appear to possess a higher level of resistance than older animals (Thiaucourt et al., 2004).

The continued presence of this important disease in Nigeria is attributed to diminished control due to the incomplete and irregular vaccination programme over the years as well as steady illegal introduction of infected cattle into these areas across the control barriers (particularly through transhumance and nomadism). Moreover, the presence in some herds of carrier animals, which might not be detected clinically or serologically could enhance the maintenance of the disease in these areas (Aliyu et al., 2000), therefore, in a third world country like Nigeria, the test LAT will allow for rapid and inexpensive primary herd screening prior to confirmatory laboratory diagnosis (using PCR or ELISA) and this will help in early recognition of the disease and allows appropriate control measures to be swiftly implemented, for example, quarantine or movement restriction.

ACKNOWLEDGEMENT

The authors thank Prof. Caleb A. Kudi, the Programme Leader (Animal Science Related Programme) School of Biological Sciences University of Plymouth, for providing the test kit at no cost, and all the farms owners for allowing their animals to be used for these studies.

REFERENCES

Ayling RD, Regalla J, Nicholas RAJ (1999). A field test for detecting antibodies to *Mycoplasma mycoides* subspecies *mycoides* small colony type using latex slide agglutination test. In: COST 826,

- Agriculture and biotechnology, Mycoplasmas of ruminants: pathogenicity, diagnostics, epidemiology and molecular genetics (Stipkovits, L., Rosengarten, R., Frey, J. eds.) Eur. Commission, Brussels. III:155-158.
- Bashiruddin JB, Nicholas RAJ, Santini FG, Ready RA, Woodward MJ, Taylor TK (1994). Use of the polymerase chain reaction to detect *Mycoplasma* DNA in cattle with contagious bovine pleuropneumonia. *Vet. Rec.* 134:240-241.
- Campbell AD, Turner AW (1953). Studies on contagious bovine pleuropneumonia of cattle. IV. An improved complement fixation test. *Austr. Vet. J.* 29:154-163.
- Chima JC, Lombin LH, Molokwu JU, Abiaye EA, Majiyagbe KA (2001). Current situation of contagious bovine pleuropneumonia in Nigeria and the relevance of CELISA in the control of the disease. A paper presented at the Research Coordination Meeting of the FAO/IAEA Coordinated Research Programme held in Nairobi, Kenya, p. 8.
- Chima JC, Mohammed A, Lombin LH, Majiyagbe KA (1999). Field validation of monoclonal antibody-based competitive ELISA for the detection of antibodies to contagious bovine pleuropneumonia. Proceedings, 2nd RCM of IAEA/FAO CRP on Monitoring of CBPP in Africa using ELISA held in Lusaka, Zambia, 27 September, pp. 11-12.
- Dasho A (2001). Epidemiology of contagious bovine pleuropneumonia in Southern Nations, Nationalities and People Regional State, Ethiopia. M.Sc. dissertation, Reading University: Reading, UK, p. 13.
- Egwu GO, Nicholas RAJ, Ameh JA, Bashiruddin JB (1996). Contagious bovine pleuropneumonia. An update. *Vet. Bull.* 66:875-888.
- Foluso EF (2003). Status of contagious bovine pleuropneumonia (CBPP) in Nigeria with emphasis on control strategies. Proceedings (2004) FAO-OIE-AU/IBAR-IAEA Consultative group on CBPP 3rd meeting, Rome 12-14. Towards sustainable CBPP control programmes in Africa.
- Le Golf C, Thiaucourt F (1998). A competitive ELISA for the specific diagnosis of contagious bovine pleuropneumonia (CBPP). *Vet. Microbiol.* 60:179-191.
- March JB, Kerr K, Lema B (2003). Rapid detection of contagious bovine pleuropneumonia by a *Mycoplasma mycoides* subsp. *mycoides* SC capsular polysaccharide-specific antigen detection latex agglutination test. *Clin. Diagn. Lab. Immunol.* 10:233-340.
- Masiga WN, Windsor RS (1978). Some evidence of age susceptibility to contagious bovine pleuropneumonia. *Res. Vet. Sci.* 24:328-333.
- McDermott JJ, Deng KA, Janatileka TN, Jack MA (1987). A cross sectional cattle disease study in Kongor Rural Council, Southern Sudan. Prevalence estimates age, sex and breed associations for brucellosis and contagious bovine pleuropneumonia. *Prev. Vet. Med.* 5:111-123.
- Miserez R, Pilloud T, Cheng X, Nicolet J, Griot C, Frey J (1997). Development of a sensitive nested PCR method for the specific detection of *Mycoplasma mycoides* subsp. *Mycoides* SC. *Mol. Cell. Probes*, 11:103-111.
- Molokwu JU, Nwanepa N (2003) Diagnosis and monitoring of Contagious Bovine Pleuropneumonia: The Nigerian Situation, National Veterinary Research Institute Seminar Series, 28th August.
- Nicholas RAJ, Santini KM, Clark KM, Palmer NMA, De Santis P, Bashiruddin JB (1996). A comparison of serological tests and gross lung pathology for detecting contagious bovine pleuropneumonia in two groups of Italian cattle. *Vet. Rec.* 139:89-93.
- Office International des Epizooties (2002). Contagious bovine pleuropneumonia. In Manuals of standards for diagnostic tests and vaccines. Office International des Epizooties, Paris, France, pp. 85-92.
- Osiyemi TIO (1981). The eradication of contagious bovine pleuropneumonia in Nigeria: Prospects and problems. *Bull. Anim Health Prod. Afr.* 29:95-97.
- Provost A, Perreau P, Beard Goff LE, Cottew GS (1987). Contagious bovine pleuropneumonia. *Rev. Sci. Techn. Off. Int. Epiz.* 6:625-679.
- Regalla JR, Goncalves J, Niza Ribeiro L, Duarte R, Nicholas, JB Bashiruddin P, De Santis F, Garrido A, Penha Goncalves A (2000). Development of immunoblotting as a diagnostic tool for contagious bovine pleuropneumonia. In Bergonnier D, Berthelot X, and Frey (ed.), Mycoplasmas of ruminants: Pathogenicity, diagnostics epidemiology, and molecular genetics. European Commission,

- Luxembourg, pp. 109-113.
- Rice P, Houshaymi BM, Nicholas RA, Miles RJ (2000). A rapid biochemical test to aid identification of *Mycoplasma mycoides* subsp. *Mycoides* Small Colony (SC) strains. *Lett. Appl. Microbiol.* 30:70-74.
- Tambi NE, Maina WO, Ndi C (2006). An estimation of the economic impact of contagious bovine pleuropneumonia in Africa. *Rev. Sci. Tech. Off. Int. Epiz.* 25(3):999-1012.
- Taylor TK, Bashiruddin JB, Gould A (1992). Application of diagnostic DNA probe for the differentiation of two types of *Mycoplasma mycoides* subspecies *mycoides*. *Res. Vet. Sci.* 53:154-159.
- Terlaak EA (1992). Contagious bovine pleuropneumonia. A review. *Vet. Q.* 15:104-110.
- Thomson GR, Dungu B, Tounkara K, Vosloo W, Bastos A, Bidjeh K (2003). Suitability of currently available vaccines for controlling the major transboundary diseases that afflict sub-Saharan Africa. In: *Vaccines for OIE List A and Emerging Animal diseases*. Brown F, Roth J. (edition). *Dev. Biol.* 114:229-241.

Full Length Research Paper

Histomorphology of the digestive system of red deer (*Cervus elaphus* L.) in Latvia

Inese Zitare^{1*}, Mara Pilmane² and Aleksandrs Jemeljanovs¹

¹Research Institute of Biotechnology and Veterinary Medicine Sigrā, Latvia University of Agriculture, Sigulda, Institute Street 1, LV 2150, Latvia.

²Institute of Anatomy and Anthropology, Riga Stradins University, Dzirciema Street 16, Riga, LV 1007, Latvia.

Accepted 25 March, 2013

The present study described the histo-morphological and immuno-histochemical characteristics of the digestive and neuroendocrine systems of captive wild domesticated red deer (*Cervus elaphus*) in Latvia. Results revealed that four (4) out of the five (5) animals studied showed keratinization of the rumen mucosa, with patchy loci of parakeratotic basal cells in the epithelium of the rumen wall. Neutrophilic leukocytes, lymphocytes and rare macrophages had infiltrated the mucosa and muscle layers of the rumen wall. Vacuolization of gangliocytes was seen in the intermuscular nerve plexus. It was observed that red deer's small and large intestines were more innervated than the rumen, despite the variations in some parts of the enveloped mucosa. Small intestines were characterized by abundant expression of serotonin. Focal appearance of neurofilaments (NF)-containing nerve fibers was characteristic of the tissues of the rumen in the direction of the large intestine. Prominent apoptosis was also seen in the rumen. Moderate hepatocyte activity, a small number of apoptotic cells in the *vena centralis* area, with simultaneously distinct expression of interleukins and limited expression of degeneration enzymes was observed in the liver of the animals studied.

Key words: Diffuse neuroendocrine system, digestive tract, red deer, morphology, Latvia.

INTRODUCTION

The digestive tract is an important system in living organisms, and plays a vital role in food processing and absorption (Hill et al., 2008). In food animals the digestive process ensures safety and healthiness of the animal product consumed by humans. Investigation of digestive tract of deer is related to health control issues for the protection of their gene pool in Latvia (Skriba, 2011).

Red deer is a ruminant belonging to herbivorous animals which prefer leguminous food: bushes, hard grass, weeds and tree scions as well as grass and fodder (Fulbright and Ortega, 2006). Fulbright and Ortega (2006) have classified deer as "intertype" animals focusing on leguminous food unlike other herbivorous animals, choosing only herbs or solely grass. Deer eats legumes,

as well as hard to digest plants and their parts containing starch, protein and fat rather than grass. It is able to digest cellulose in plant cell walls, although this ability is restricted.

Feed processing starts in the rumen (the largest structure in the digestive tract of deer) with consecutive passage through the small and large intestines. The process in the whole digestive tract is closely connected with the functioning of the diffuse neuro-endocrine system (DNES), described by Ceccarelli et al. (1995) in fallow deer (*Dama dama*) and Franco et al. (2004) as well as Masot et al. (2007) in red deer (*Cervus elaphus*). Mallard et al. (1998) and Zabielski et al. (1998) suggested impact of neuropeptide-containing

*Corresponding author. E-mail: sigra@lis.lv. Tel +34167976307.

innervations on the intrauterine development of the digestive system, breaking down and absorption of the nutrients, contractions of the walls of hollow organs of the digestive system, as well as local immune responses. Bueno and Fioramonti (1994) found correlations between the changes of neuro-peptide innervations and metabolic disorders of the body. Although, Münnich et al. (2008) have studied the role of DNES in the digestive tract of based on feed selection, there is scarcity of information on the morpho-functional structure of the digestive tract of wild red deer under captivity in Latvia.

Wholesome investigations of the deer digestive tract require concurrent studies of the homeostasis of the liver cells in this animal, as liver is the biochemical laboratory of the body where various processes such as essential metabolic functions, protein synthesis, detoxification of the body, bile secretion, etc occur (Barrett, 2011). Function of the digestive tract in the body is closely related to function of the liver: the absorbed nutrients are carried to the liver where they are processed and stored (Barrett, 2011). According to Junqueira and Carneiro (2003), liver is a coordinator between the digestive tract and blood. Histological studies by Soveri (1993) revealed that in winter, when a deer under natural circumstances is forcefully starved, the parenchyma of its liver changes due to reduction in the size of the liver cells and sinusoidal cavities. According to Knolle and Gerken (2000) and Kmiec (2001), mutual functioning of separate cells of the liver tissues is strictly connected in both healthy and sick deer.

Previous histological studies in red deer (Hartwig and Hartwig, 1975; Hals and Cato Olsen, 1984; Soveri, 1993; Shabadash and Zelikina, 2003), revealed scanty or no data on morpho-functional structures of the digestive system of wild captive species of in Latvia. Studies are needed in order to justify conditions of captivity to comply with the physiological requirements of the bodies of red deer, ensuring their well-being and high quality of the acquired meat. The main goal of our study was to carry out histological and immunohistochemical (IHC) investigations of the morphological structures and neuroendocrine system of the digestive system of captive red deer (*C. elaphus* L.).

MATERIALS AND METHODS

Animals and tissue preparation

The study included five clinically healthy 18 months old red deer (*C. elaphus* L.) farmed in Sigulda municipality of Latvia, in captivity. Each of the animals over the winter period had received daily feed ration of 7 kg of haylage and kg of rolled grain; containing 2.63 kg of dry matter and 121 g (per kg of dry matter) crude protein. The amounts were estimated by means of "RationPro MVP" (USA) software on the bases of the feeding-stuff analysis. Additionally, animals fed themselves on bushes growing within their fence as supplements.

Animals were slaughtered at the end of the experiment, and 0.5-1 × 1 cm tissue samples were taken from the back part of *saccus*

caecus ventralis of rumen, the medium sections of *duodenum* and *colon* and from the liver. Rumen and intestinal samples were rinsed with warm 0.9% NaCl solution. Subsequently, all the tissue samples were placed in 10% neutral formalin at room temperature for 48 h and then dehydrated in tissue processor (TISSUE-TEKII) and embedded in paraffin blocks. Tissues were processed according to standard procedures (Kiernan, 2008; Carson and Hladik, 2009).

For general histological assessment, the tissue samples were de-paraffinized with xylene and ethyl alcohol, and then stained as described by (Carson and Hladik, 2009).

Immunohistochemistry

Samples for immunohistochemical (IHC) investigation were fixed for twenty-four hours in a mixture consisting of 2% formaldehyde, 0.2% picric acid and 0.1 M phosphate buffer (pH 7.2) (Aughey and Frye, 2001). Then the pieces of tissues were rinsed for 12 h in a thyroid buffer containing 10% sucrose, embedded in paraffin and cut with a microtome in 8 µm thick layers. Prior to immune-staining, sections were de-paraffinized and rehydrated. Sections were processed in a microwave for 20 min in 4% citrate buffer (pH 10), quenched for 10 min with 3% H₂O₂ to block endogenous peroxidase activity, rinsed in a phosphate-buffered saline (pH 7.4), pretreated with a non-immune goat serum for 10 min to block the nonspecific antibody binding and then incubated for 2 h with the primary antibodies (Hsu et al, 1981).

The primary antibodies used in the IHC investigation of gastrointestinal samples were protein gene peptide 9.5 (PGP 9.5) (rabbit polyclonal, working dilution 1:600, code Z5116, DACO, Denmark), serotonin (mouse monoclonal, code M758, working dilution 1:10, DACO, Denmark), neuro-filaments (NF) (mouse monoclonal, code M0762, working dilution 1:160, *Euro-Diagnostika*, Denmark), neuro-peptide Y (NPY) (rabbit polyclonal, code B48-100, working dilution 1:100, Peninsula, Sweden).

Expression of hepatocyte growth factor (HGF) in the liver samples was evaluated by means of HGF antibody (mouse monoclonal, code AF294NA, working dilution 1:300, R&D Systems, Germany). Expression of interleukin 6 (IL-6, mouse monoclonal, code NYRhlL6, working dilution 1: 50, Santa Cruz Biotechnology,, USA) and interleukin 10 (IL-10), rabbit polyclonal, code ab34843, working dilution 1: 400, Abcam, UK) and matrix metalloprotease 13 (MMP13), *Escherichia coli*, code sc 81547, working dilution 1:100, Santa Cruz, USA) were also studied in the liver cells.

Immune reaction was visualized by the avidin-biotin immune-peroxidase method using an LSAB kit (Dako Cytomation, DK) and diaminobenzidine (DAB) solution (Dako Cytomation, DK) was used as chromogen, and hematoxylin was used as the counter-stain.

Apoptosis was detected by the means of TUNEL assay, described by Negoescu et al. (1998) in all the tissue samples from the gastrointestinal tract. *In situ* Cell Death Detection kitPOD (1684817, Roche Diagnostics) and Vector DAB Peroxidase substrate kit were used to perform the TUNEL assay according to the manufacturers' instructions, briefly: deparaffinized sections (xylol 2×4 min, 99% ethanol 2×2 min, 95% ethanol 2×2 min and 70% ethanol 2×2 min) were rinsed with water for 7 to 10 min and transferred to PBS (pH 7.5) for 10 min. Subsequently slides were placed into 50 ml PBS solution with 500 µl 30% hydrogen peroxide for 30 min on shaker to block the endogenous peroxidases. Afterwards, tissue samples were washed with PBS (3×5min), placed into 0.2 M boric acid (pH 7.0), and then placed in microwave (700 W) for 10 min to fix antigen. Content was cooled to room temperature and rinsed with PBS. Subsequently, slides were kept in refrigerator in 0.1% bovine serum albumin (BSA) solution with PBS for 19 min and incubated in TUNEL mix (Tdt – mix of terminal deoxynucleotide transferase and DIG-labeled deoxynucleotide) for 1 h at 37°C. Then the slides were rinsed with PBS 1:10 and incubated for 30 min at 37°C with POD (anti-fluorescein antibody,

Fab fragment from sheep, conjugated with horse-radish peroxidase). Then the slides were washed with PBS, covered with DAB (diaminobenzidine chromogen) for 7 min, and then rinsed with running water for 5 min. Finally, haematoxylin and eosin staining was performed on each sample. Sections were covered with a polystyrene-based medium and coverslip.

Samples were viewed by Leica DM 5000B microscope ($\times 250$ and $\times 400$), and pictures were obtained by Leica DC 300F digital camera using software *Image Pro Plus* version 6.3.0.512 for Windows XP Vista, serial number 41N63000-58567 (Media Cybernetics, USA).

Statistical analysis

The mean values and standard deviations were determined statistically using statistical package SPSS 17.0. Pearson correlation test was applied for determination of the correlation among parameters (Arhipova and Balina, 2006).

Wilcoxon's T-criterion test was applied for interdependent groups of samples and statistically significant differences were evaluated at $p < 0.05$ (Sheskin, 2011). Quantitative method was applied to count HGF positive structures and apoptotic cells within three freely chosen visual fields around the central vein of the liver and portal tract area at magnification $\times 400$. The expression of cytokines was determined by simplified qualitative counting method, and presence or amount of positive immune structures were evaluated as low (+), medium (++) or high (+++) using a method described by Pilmane et al. (1998).

RESULTS

Examination of the sampled tissue sections under light microscope revealed characteristic keratinization of the *fundus* of rumen mucosa in four of the five animals studied, clear distinctions in two cases. Also some areas of the tissue samples from the rumen wall revealed more or less distinct basal cell hyperplasia of para-keratotic epithelium (Figure 1). Infiltration of patchy inflammatory cells in mucosa and muscular layer was represented by neutrophilic leukocytes, lymphocytes and rare macrophages. Vacuolization of gangliocytes was observed in some areas of the inter-muscular nerve plexus. Changes in the small intestines of four animals were relatively similar: walls, especially mucosa, were infiltrated by high or medium-high number of inflammatory cells. Inflammatory cells were represented by lymphocytes, neutrophilic and eosinophilic leukocytes, macrophages and plasmocytes. In two cases, proliferating connective tissue were detected in the small intestinal villi. Inflammation of the mucosa of the large intestine was prominent in two cases (Figure 2) and of small intestines - in one case. One of the animals had evident atrophy of mucosa in some areas of the large intestine.

The present study showed that the small and large intestines of red deer (*C. elaphus* L.) bred in Latvia was more innervated than the rumen although in some areas mucosal envelope presented variations.

General marker PGP 9.5 for the DNES indicated nerve fibers around arteries; the largest number of peptide-containing nerve fibers and gangliocytes was found in

sub-mucosa and inter-muscular nerve plexus of the small and large intestinal walls (Table 1). Wilcoxon's T-criterion test for interdependent groups of samples did not reveal statistically significant differences ($p > 0.05$) between the expression of PGP 9.5 in the mucosa of rumen, small and large intestines. Correlation was also insignificant ($p > 0.05$) between the expression of PGP 9.5 in the sub-mucosa and the muscle layers of rumen as well as small and large intestines.

A few patchy loci of NPY containing nerve fibers were found in the deer's rumen and the small intestinal wall muscle layer. Some NPY-containing fibers were found in the muscle layer of the wall of large intestines. The insignificant expression of NPY confirmed the minor role of this neuro-peptide on the functions of digestive system of deer. NF-containing nerve fibers were widely found in the basal and muscle layers of the rumen and the small intestines and in all of the wall layers of the large intestine, though they were patchy and fragmentary in some areas. A high amount of serotonin-containing neuroendocrine cells were found in the epithelium of the small intestine while medium-high amount of those cells was found in the epithelium of the large intestine (Figure 3); no cells of this type were found in the epithelium of the rumen. Index of apoptosis was higher in the rumen mucosa (0.17), but was lower in the mucosa of the small intestines and that of the large intestine (Figure 4, Table 2).

Wilcoxon's T-criterion test for interdependent groups of samples revealed significantly higher level of apoptosis in the rumen mucosa comparing to mucosa of the small intestine ($p < 0.05$ or $T = 0 < T_{0.05; 15} = 30$). The difference between the levels of apoptosis in the mucosa of the small and large intestine was insignificant ($p > 0.05$ or $T = 30 > T_{0.05; 15} = 25$).

Histological investigations of the liver samples of deer revealed well-formed liver structure: a liver lobe with *V. centralis* and portal tracts. Inflammation with lymphocytes was detected in the walls of the blood vessels of portal tracts. Expression of HGF was more distinct in the cytoplasm of the hepatocytes of the portal tracts and less – around *V. centralis*.

As shown in Table 3, 34.4 ± 17.47 HGF positive hepatocytes were found on average in 3 visual fields near the acinus. The average number of apoptotic cells in the portal tract was 5.2 ± 1.09 , apoptotic index – from 0.04 to 0.07, in *V. centralis* area - 13.2 ± 2.59 , apoptotic index: 0.1 to 0.2. Distinct expression of IL-6 was detected around the blood vessels and bile ducts. IL-10 positive cells were found in the whole liver parenchyma. Weak expression of MMP13 was observed around the blood vessels.

DISCUSSION

Animals included in the study were given 7 kg of haylage and 1 kg of rolled grain during the winter period thus

Table 1. Relative distribution of protein gene peptide 9.5 in separate parts of deer's digestive tract.

Animal	Tissue layer	Rumen	Small intestine	Large intestine
1.	Mucosa	++	++	+
	Submucosa	++	++++	++++
	Muscle layer	++	++	++++
2.	Mucosa	++	++	+++
	Submucosa	++	++++	+++
	Muscle layer	++	+++	+++
3.	Mucosa	+/-	++++	++++
	Submucosa	++	++++	++++
	Muscle layer	+/-	++++	++++
4.	Mucosa	+/-	++	+
	Submucosa	+	++	++
	Muscle layer	+/-	++	+++
5.	Mucosa	+	+++	++
	Submucosa	+	++++	+++
	Muscle layer	+	++++	++++

+/- Rare positive structures in visual field; + few containing structures in visual field; ++ moderate number containing structures in visual field; +++ numerous containing structures in visual field; ++++ very high number of containing structures in visual field.

Table 2. Number of apoptotic cells in digestive tract wall of red deer.

Parts of red deer's digestive tract in mucosa	Average number of positive cells from 100 cells in visual field and standard deviation	Index of apoptosis
Rumen	14.7±3.06	0.17
Small intestine	8.7±2.52	0.10
Large intestine	4.7±2.52	0.05

Table 3. Results of immunohistochemical investigations of red deer (*Cervus elaphus* L.) liver.

Animals	HGF positive cells	Portal tract		<i>V. centralis</i> area		Interleukin expression		MMP13 expression
		Number of apoptic cells	Apoptic index	Number of apoptic cells	Apoptic index	IL-6	IL-10	
1.	20	5	0.05	10	0.1	+++	+++	+
2.	29	5	0.05	13	0.15	+++	+++	+
3.	35	7	0.07	12	0.14	+++	+++	+
4.	64	5	0.05	17	0.20	++/+++	+++	+
5.	24	4	0.04	14	0.16	++/+++	+++	+
Average	34.4±17.47	5.2±1.09		13.2±2.59				

Positive immune cells are marked by: (+) – few, (++) – moderate, and (+++) – high number of positive cells.

providing 2.63 kg of dry matter and 318.2 g of crude protein as well as sufficient ration of energy (46.7 MJ ME

per day). Our findings agree with the study of Josefsen (1997), which reported that changes in the mucosa of

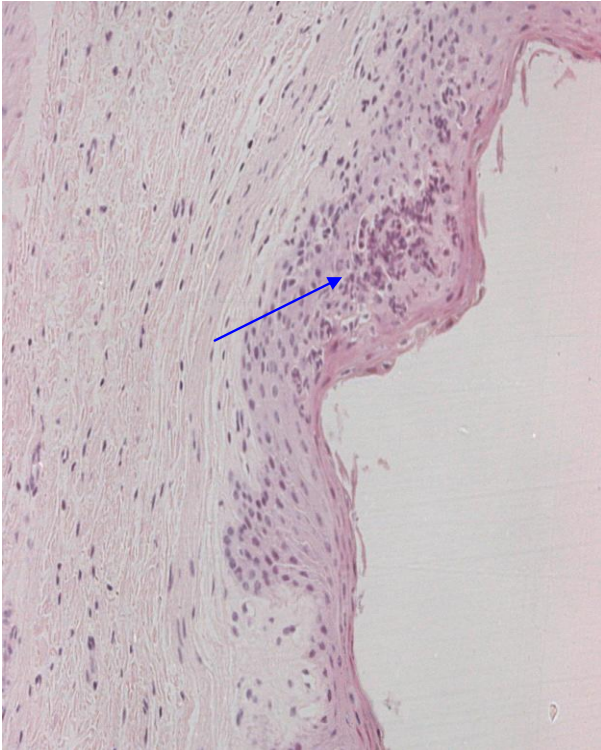


Figure 1. Keratinization of ruminal mucosa (H&E, magnification x200).

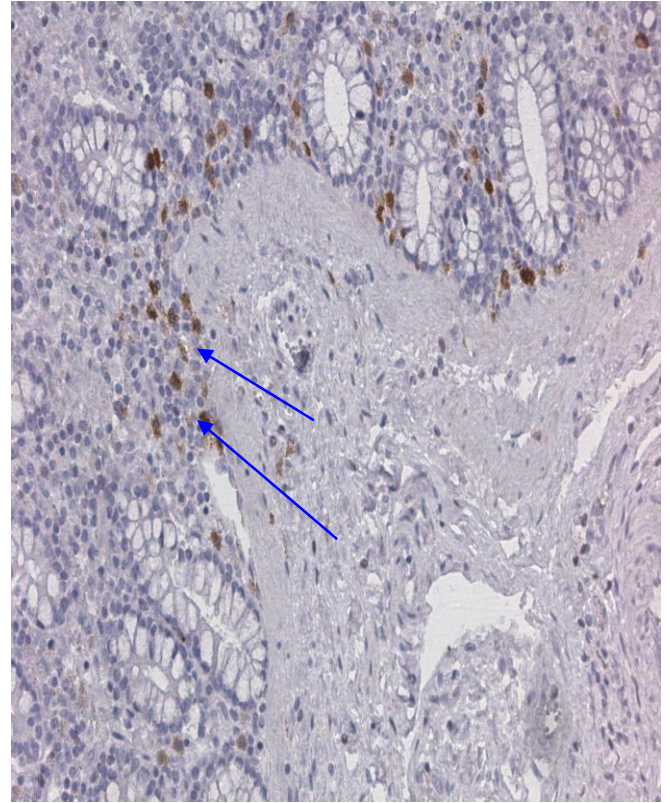


Figure 3. Serotonin expression in colon wall (IHC, magnification x250).



Figure 2. Inflammatory process in large intestines wall (H&E, magnification x400).

digestive tract of deer (inflammation, para-keratosis and atrophy) may be caused by the influence of local solid forage particles. Atrophy of the mucosal villi was observed in the digestive tract of one of the deer in our study because the deer preferred grazing on bushes. Atrophy of the mucosal villi, found in the digestive tract of deer, according to Mallard et al. (1998), is related to the changes of the local immune system and the DNES. Münnich et al. (2008) have investigated innervations of the DNES in the rumen wall of fallow deer and found that the rumen of these animals is less controlled in terms of cholinergic nerves in comparison with that of cattle, sheep and goats, despite the fact that the majority of neuron sub-populations were found in the inter-muscular nerve plexus of the rumen wall. Development of the DNES in the digestive tract was investigated also for red deer (*C. elaphus* L.) at the stage of prenatal development; no neuro-endocrine cells were found in *rumen*, *reticulum*, *omasum* or *abomasum* until the 67th day of fetal development (Franko et al., 2004a, b; Redondo et al., 2005; Masot et al., 2007). In the consecutive days of fetal development they were found in sub-mucosa - *lamina propria* and muscle layer - *tunica muscularis* (Franko et al., 2004 a, b; Redondo et al., 2005; Masot et al., 2007). DNES was not found in the epithelium. Prenatal development of the DNES in deer is

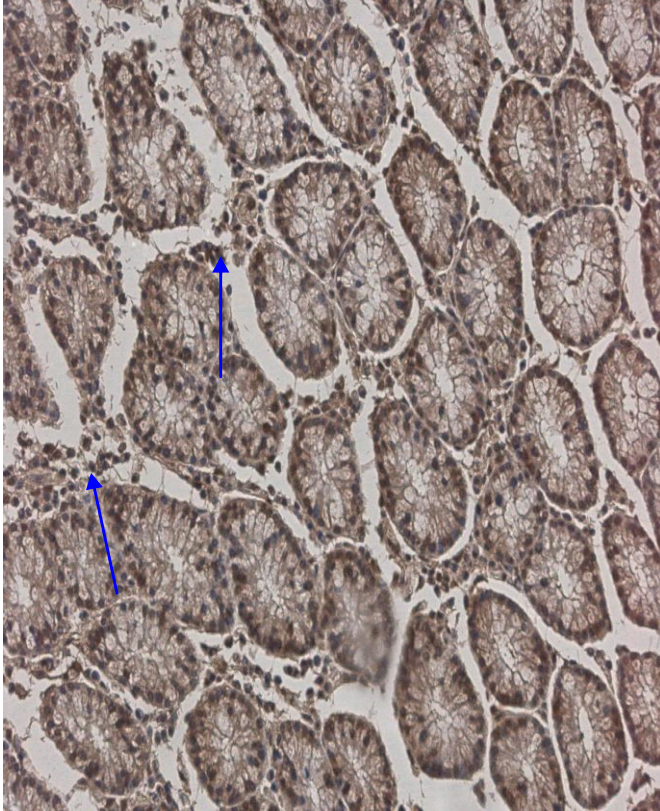


Figure 4. Apoptosis in large intestines wall (TUNEL, magnification x250).

slower in comparison with that of other ruminants: sheep, goats and cattle (Redondo et al., 2005). Activity of DNES of adult red deer digestive tract (*C. elaphus* L.) is related to its physiological functions by consuming different feed in winter and summer periods (Sibbald and Milne, 1993; Freudenberger et al., 1994). The growth factors and peptide hormones of DNES regulate the splitting up and absorption of the nutrients and contractions of the muscle membrane of whole wall of the digestive tract (Zabielski et al., 1998).

A few patchy loci of NPY-containing nerve fibers found in the muscle layer of the deer rumen and the wall of small intestines as well as some NPY-containing fibers in the muscle layer of the wall of the large intestine could be related to the antibiotic-like ability to disintegrate penetrability of microorganism surface and change the lumen of blood vessel wall as described by Vouldoukis et al. (1996). Although some studies (Franco et al., 2004 a,b; Redondo et al., 2005; Masot et al., 2007) have reported the presence of distinct NPY in submucosa and muscle layer of *rumen*, *reticulum*, *omasum* and *abomasum* of red deer embryos before birth, the present study revealed that NPY does not play a significant role in the digestive function of adult deer. The finding in the present study also contradicts those of Allen et al. (1987)

which showed that NPY can be found in the nerve fibers of the whole digestive tracts of pigs, rats and guinea-pigs, but are lowly expressed. Low expression of NPY in the digestive tract of the studied animals basically excluded this neuro-peptide from the list of important regulators of digestive system functions of deer.

According to Ulfig et al. (1998) NF are characteristic structural differentiation of the structure of nerves. Pathological changes in NF have a significant impact on the regeneration of motor and sensory axons (Rao et al., 1998). Our results showed that NF-containing nerve fibers are widely seen only in mucosa and muscle layers of the rumen and the small intestines, however some focal points of these nerve fibers were found in all the layers of the large intestine wall. Appearance of patchy loci of NF-containing nerve fibers from the rumen towards the large intestine is a base for patchy loci of cytoskeleton damage and therefore proves the reduced quality of the nerve fibers. Previous study reports that changes in both the cytoskeleton of nerve fibers and the DNES may occur during active metabolic processes (Bueno and Fioramonti, 1994), which was also the assumption in the present study.

Results of the present study also showed the presence of high amount of serotonin-containing cells in the epithelium of the small intestine, and medium-high amount in the epithelium of the large intestine. According to Camilleri (2009), serotonin is involved in many physiological functions of the digestive tract: Its primary role being the prevention of acid secretion in the stomach and may serve as an endogenous enterogastron. Other functions include stimulates the production and secretion of mucus in the stomach and the large intestine, influencing the innervation of intestinal smooth muscle by focusing directly on the mesenteric vascular smooth muscle or through intestinal nerves and exerting impact on the blood flow in the stomach and the intestinal tract. Thus, it be can concluded that abundant expression of serotonin in the epithelium of the small intestine makes these cells the most intense place of metabolic processes in the digestive tract.

Programmed cell death or apoptosis appears when death of the cell is caused by the factors in the cell itself and is also fostered by the expression of *bcl2* gene outside the cell, activating caspase and simultaneously initiating activation mechanism of mitochondrion and lysosomes, as well as, plant oxidative stress (Brunner and Mueller, 2003). In comparison with other parts of the deer's digestive tract, the present study observed the most distinct apoptosis in its largest part– the rumen where the most intense decomposition of feed and absorption processes occurs. These probably increase cell stress and initiate the cascade of programmed cell death.

The walls of the vessels of the portal tract area revealed inflammation processes probably related to the transport of nutrients absorbed in the small intestine.

According to the studies published by Watanabe et al. (2003) and Hironobu et al. (2006), the liver portal tract area shows higher apoptotic index and statistically significantly higher number of HGF positive cells that ensure regeneration ability of the liver. Maher (1993) described that in a healthy liver HGF is found in the cells of sinusoidal endothelium and Kupffer cells. However, during regeneration process of the liver, it is produced by the liver stellate cells or *Ito* cells (Hironobu et al., 2006), as well as fibroblasts, epithelial and endothelial cells, hepatocytes and Kupffer cells (Maher, 1993). Studies by Miyazawa et al. (1996) and Ishikawa et al. (2001) reports that HGF in a healthy liver is found in an inactive-single chain form, but in the cases of pathology it turns into an active-heterodimeric form. By reducing cell apoptosis, HGF participates in the angiogenesis and morphogenesis (Funakoshi and Nakamura, 2003), which corresponds with the findings of the present study: whenever there appears an inflammation in the walls of blood vessels, HGF expression increases and apoptotic index decreases and vice versa in the *V. centralis*.

Matrix metalloproteases (MMP13) are enzymes of cell surface that demolish the majority of peri-cellular substrate (collagen, gelatine, fibronectin, laminin and proteoglycan) participating in many physiological and pathological processes (Nagase and Woessner, 1999). The expression of MMP13 in the parenchyma of the deer's liver was very low. Investigation in to MMP13 revealed that their function in the majority of body development processes and homeostasis, and in a disease process were still uncertain (Birkedal-Hansen et al., 1993; Sternlicht and Werb, 2001). Our study did not reveal any significant expression of MMP13 in the digestive tract of red deer and neither a significant role in their functions.

Our study also revealed distinct expression of interleukins: Expression of IL-6 was mainly found around the blood vessels and bile ducts, and IL-10 markedly expressed throughout the whole liver parenchyma. Previous studies (Cressman et al., 1996; Heinrich et al., 2003; Coelho et al., 2007) have explained that distinct IL-6 expression around the blood vessels relies on the regeneration processes in the liver. Expression of IL-10 in the liver is related to the immune system and IL-10 is the main regulator of the immune system with its key role in providing anti-inflammatory effect (Howard and O'Garra; 1992; Abbas et al., 1994). Considering the findings of the above studies we concluded that small number of apoptotic cells around *V. centralis* area, high expression of interleukins and simultaneously limited expression of degeneration enzymes on the background of medium distinct hepatocyte activity in the liver of the animals in the present study indicate normal liver activity.

Conclusions

1) The small and large intestines of captive red deer (*C.*

elaphus L.) are richly innervated although there are variations of the nerve supply in some places.

2) Abundant expression of serotonin in the epithelium of the small intestines makes this part of the digestive system to be the most intense place of metabolic processes in the digestive tract, while the low NPY expression basically exclude this neuro-peptide from the list of important regulators of the deer's digestive system functions.

3) Focal appearance of NF-containing nerve fibers from the rumen towards the large intestine is a base for patchy loci of cytoskeleton damage and therefore reduces the quality of nerve fibers.

4) Intense processes of apoptosis in the rumen probably rely on the intense food cleavage and absorption processes and could be evaluated as a compensatory reaction on the side of tissues.

5) The small number of apoptotic cells around *V. centralis* area, the distinct expression of interleukins and at the same time limited expression of degeneration enzymes on the background of medium hepatocyte activity in the livers of the animals studied most probably indicate normal liver tissue activity.

ACKNOWLEDGEMENTS

The present work is funded by State Research Programme "Sustainable use of local resources (earth entrails, forests, food and transport) – new products and technologies (NatRes)" and publication has been supported by project "Raising Awareness and Fostering International Cooperation of the Research Institute of Biotechnology and Veterinary Medicine "Sigra"", agreement No 2010/0197/2DP/2.1.1.2.0/10/APIA/VIAA/016.

REFERENCES

- Abbas A, Lichtman A, Pober J (1994). Cellular and Molecular Immunology. 2nd Ed., WB Saunders Company, Philadelphia. pp. 1-572.
- Allen JM, Hughes J, Bloom SR (1987). Presence, distribution, and pharmacological effects of neuropeptide Y in mammalian gastrointestinal tract. Dig. Dis. Sci. 32(5):506-512.
- Arhipova I, Balina S (2006). Statistics in economy. Solutions with SPSS and Microsoft Excel (in Latvian). 2nd Ed., Computer Science center, Riga, Latvia 352 p.
- Aughey E, Frye FL (2001). Comparative veterinary histology with clinical correlates. Manson Pub.Ltd, London pp 14-127.
- Barrett KE (2011). Functional anatomy of the liver and biliary system. In: Raff H and Levitzky MG Eds. Medical physiology: A systems approach. McGraw-Hill Professional Publishing New York, USA pp 559-565.
- Birkedal-Hansen H, Moore WG, Bodden MK, Windsor LJ, Birkedal-Hansen B, DeCarlo A, Engler JA (1993). Matrix metalloproteinases: review. Crit. Rev. Oral Biol. Med. 4(2):197-250.
- Brunner T, Mueller C (2003). Programmed cell death: Chapter 9 Apoptosis in disease: About shortage and excess. Essays Biochem. 39:119-130.
- Bueno L, Fioramonti J (1994). Neurohormonal control of intestinal transit [neuropeptides, motilin, CCK (cholecystokinin)]. J. Repr. Nutr. Dev. 34(16):513-525.

- Camilleri M (2009). Serotonin in the gastrointestinal tract. *Curr. Opin. Endocrinol. Diabetes Obes.* 16(1):53-59.
- Carson FL, Hladik Ch (2009). *Histotechnology. A Self-Instructional Text.* Third Ed., Chicago ASCP Press, 400 p.
- Ceccarelli P, Pedini V, Gargiulo AM (1995). The Endocrine Cells in the Gastro-enteric Tract of Adult Fallow Deer (*Dama dama* L.). *Anatomia Histologia Embryologia* 24(3):171-174.
- Coelho MC, Tannuri U, Yannuri AC, Mello ES, dos Santos NA (2007). Expression of interleucin 6 and Apoptosis-related genes in suckling and weaning rat models of hepatectomy and liver regeneration. *J. Pediatr. Surg.* 42(4):623- 619.
- Cressman DE, Greenbaum LE, DeAngelis RA, Ciliberto G, Furth EE, Poli V, Taub R (1996). Liver Failure and Defective Hepatocyte Regeneration in Interleukin-6- Deficient Mice. *Science* 274(5291):1379-1383.
- Franco A, Masot AJ, Gómez L, Redondo E (2004a). Morphometric and immunohistochemical study of the rumen of red deer during prenatal development. *J. Anat.* 204(6):501-513.
- Franco A, Redondo E, Masot AJ (2004b). Morphometric and immunohistochemical study of the reticulum of red deer during prenatal development. *J. Anat.* 205(4):277-289.
- Freudenberger DO, Touakawa K, Barry TN, Ball AJ, Suttie JM (1994). Seasonality in digestion and rumen metabolism in red deer (*Cervus elaphus*) fed on a forage diet. *Brit. J. Nutr.* 71(4):489-499.
- Fulbright TE, Ortega-Santos JA (2006). White-tailed deer habitat: ecology and management on rangelands. First Ed., Texas A&M University Press, College Station, Texas, USA 241 p.
- Funakoshi H, Nakamura T (2003). Hepatocyte growth factor: from diagnosis to clinical applications. *Clinica Chimica Acta* 327:1-23.
- Hals E, Cato Olsen, H (1984). Scanning electron and incident light microscopy of giant tubules in red deer dentin. *Scand. J. Dental Res.* 92(4):269-274.
- Hartwig H, Hartwig HG (1975). The spleen of the cervidae (Gray, 1821). Quantitative-morphological studies on the spleens of stags (*Cervus elaphus* L. 1785) and of deers (*Capreolus capreolus* L. 1758). *Gegenbaurs morphologisches Jahrbuch* 121(6):669-697.
- Heinrich PC, Behrmann HS, Hermanns HM, Müller- Newen G, Schaper F (2003). Principles of interleukin (IL)-6-type cytokine signalling and its regulation. *Biochem. J.* 374(1):1-20.
- Hill RW, Wyse GA, Anderson M (2008). *Animal Physiology.* 2nd Ed., Sinauer Associates, Inc., 762 p.
- Hironobu M, Hiroaki S, Hiroshi I, Fumio K, Satoshi A, Akira T, Masayuki O, Hiroyuki Y, Atsushi K, Hideyuki Y, Shigeaki S, Masaru M (2006). Changes in growth factor and cytokine expression in biliary obstructed rat liver and their relationship with delayed liver regeneration after partial hepatectomy. *World J. Gastroenterol.* 12(13):2053-2059.
- Howard M, O'Garra A (1992). Biological properties of interleukin 10. *Immunol. Today* 13(6):198-200.
- Hsu SM, Raine L, Fanger H (1981). The use of antiavidin antibody and avidin-biotin peroxidase complex in immunoperoxidase technics. *Am. J. Clin. Pathol.* 75(12):816 -821.
- Ishikawa KS, Masui T, Ishikawa K, Shiojiri N (2001). Immunolocalization of hepatocyte growth factor and its receptor (c-Met) during mouse liver development. *Histochem. Cell Biol.* 116(5):453-462.
- Josefsen TD (1997). Influence of diet on the occurrence of intraepithelial microabscesses and foreign bodies in the ruminal of reindeer calves (*Rangifer tarandus tarandus*). *Zentralblatt für Veterinarmedizin* 44(5):249-257.
- Junqueira LC, Carneiro J (2003). Organs associated with the digestive tract. In: *Basic histology. Text & Atlas* 10th Ed., McGraw-Hill Publishing Co, Stamford. pp 332-344.
- Kiernan J.A. (2008). *Histological and histochemical methods.* 4th Ed., Scion Publishing Ltd. 606 p.
- Kmieč Z (2001). Cooperation of liver cells in health and disease. *Adv. Anat. Embriol. Cell Biol.* 161(III-XIII):1-151.
- Knolle PA, Gerken G (2000). Local control of the immune response in the liver. *Immunol. Rev.* 174(1):21-34.
- Maher JJ (1993). Cell specific Expression of Hepatocyte growth factor in liver. *J. Clin. Invest.* 91:2244-2252.
- Mallard BA, Dekkers JC, Ireland MJ, Leslie KE, Sharif S, Vankampen CL, Wagter L, Wilkie BN (1998). Alteration in immune responsiveness during the peripartum period and its ramification on dairy cow and calf health. *J. Dairy Sci.* 81(2):585-595.
- Masot AJ, Franco AJ, Redondo E (2007). Morphometric and immunohistochemical study of the abomasum of red deer during prenatal parental development. *J. Anat.* 211(3):376-386.
- Miyazawa K, Shimomura T, Kitamura N (1996). Activation of hepatocyte growth factor in injured tissues is mediated by hepatocyte growth factor activator. *J. Biochem. Chem.* 271(7):3615-3618.
- Münnich J, Gotthold G, Pfannkuche H (2008). Intrinsic ruminal innervation in ruminants of different feeding types. *J. Anat.* 213(4):361-498.
- Nagase H, Woessner JF (1999). Matrix metalloproteinases. *J. Biol. Chem.* 274(31):21491-21494.
- Negoescu A, Guillermet Ch, Lorimer Ph, Robert C, Lantuejoul S, Brambilla E, Labat-Moleur F (1998). TUNEL apoptotic cell detection in archived paraffin-embedded tissues. *Biochemica* 3:36-41.
- Pilmene M, Rumba I, Sundler F, Luts A (1998). Patterns of occurrence and distribution of neuroendocrine elements in lungs of humans with chronic lung diseases. *Proc. Latvian Acad. Sci.* 52(596/597):144-152.
- Rao MV, Houseweart MK, Williamson TL, Crawford TO, Folmer J, Cleveland DW (1998). Neurofilament-dependent radial growth of motor axons and axonal organization of neurofilaments does not require the neurofilament heavy submit (NF-H) of its phosphorylation. *J. Cell Biol.* 143(1):171-181.
- Redondo E, Franco AJ, Masot AJ (2005). Morphometric and immunohistochemical study of the omasum of red deer during prenatal development. *J. Anat.* 206(6):543-555.
- Shabadash SA, Zelikina TI (2003). Unknown hepatoid glands of some species of cats and deer. *Izvestiia Akademii nauk. Seriya biologicheskaja* 4:462-472.
- Sheskin DJ (2011). *Handbook of Parametric and Nonparametric Statistical Procedures* Fifth Ed., Chapman and Hall/CRC. 1026p.
- Sibbald AM, Milne JA (1993). Physical characteristics of the alimentary tract in relation to seasonal changes in voluntary food intake by red deer. *J. Agri. Sci., Cambridge* 120(1):99-102.
- Skriba G (2011). *Red Deer Origin, Distribution and Breeding in Latvia* (in Latvian). Publisher Staltbriezi, Latvia 617 p.
- Soveri T (1993). Liver Histology of Reindeer Calves during the Winter Season. *Anat. Hist. Embriol.* 22(4):313-318.
- Sternlicht MD, Werb Z (2001). How matrix metalloproteinases regulate cell behavior. *Am. Rev. Cell Dev. Biol.* 17:463-516.
- Ulfing N, Nickel J, Bohl J (1998). Monoclonal antibodies SMI 311 and SMI 312 as tools to investigate the maturation of nerve cells and axonal patterns in human fetal brain. *Cells Tiss. Res.* 291(3):433-443.
- Vouldoukis I, Shai Y, Nicolas P, Mor A (1996). Broad spectrum antibiotic activity of the skin- PYY. *FEBS Lett.* 380(3):237-240.
- Watanabe H, Sumi S, Kitamura Y, Nio Y, Nigami T (2003). Immunohistochemical Analysis of Vascular Endothelial Growth Factor and Hepatocyte Growth Factor, and Their Receptors, Transplanted Islets in Rats. *Surgery Today* 33:854-860.
- Zabielski R, Dardillat C, Le Huërou-Luron I, Bernard C, Chayvialle JA, Guilloteau P (1998). Periodic fluctuations of gut regulatory peptides in phase with the duodenal migrating myoelectric complex in preruminant calves: Effect of different sources of dietary protein. *Brit. J. Nutr.* 79(3):287-296.

Full Length Research Paper

Occurrence of ectoparasites and gastro-intestinal helminthes infections in Fayoumi chickens (*Gallus gallus Fayoumi*) in Debre Zeit Agricultural Research Center Poultry Farm, Oromia region, Ethiopia

Yacob Hailu Tolossa* and Hagos Ashenafi Tafesse

Department of Pathology and Parasitology, Addis Ababa University, College of Veterinary Medicine and Agriculture, P. O. Box 34, Debre-Zeit, Ethiopia.

Accepted 28 February, 2013

A study for ectoparasites and gastrointestinal (GI)-helminthes was conducted on 212 Fayoumi chickens raised under semi-intensive management system at Debre Zeit Agricultural Research Center (DZARC) poultry farm from October, 2009 to May, 2010. The results of study indicated that 52 (24.53%), 34 (16.04%) and 5 (2.35%) of the examined chickens were harbouring one species of nematode (*Ascaridia galli*), three species of cestodes (*Raillietina echinobothrida*, *Raillietina tetragona* and *Raillietina cesticillus*) and two species of ectoparasites (*Menacanthus stramineus* and *Menopon gallinae*), respectively. There was no statistically significant difference ($p > 0.05$) in prevalence infection of cestodes between sex (males and females) and age groups. Similarly, there was no statistically significant difference ($p > 0.05$) in prevalence of infection with nematode sex (males and females) and age groups. The present study clearly indicated that Fayoumi chickens kept under semi-intensive management system in DZARC poultry farm were exposed to ectoparasites and GI-helminthes. Due attention is required to the control the parasitism.

Key words: Debre Zeit Agricultural Research Center (DZARC) poultry farm, ectoparasites, Fayoumi chickens, gastrointestinal (GI)-helminths, prevalence.

INTRODUCTION

Poultry production is becoming one of the most highly developed segments of food animal production globally. Accordingly, to gain the maximum profitability out of the industry, greater efforts have been put to make changes in the methods of production (Ensminger, 1992). In developing countries, apart from traditional back yard methods of raising chickens, the more commercialized poultry production is increasingly intensified in large scale (FaBiyi, 1980; Alemu, 1985). Despite the presence of large number of chickens in Ethiopia, contribution to the national economy or benefit exploited for domestic chicken is very limited due to disease and nutritional

limitation (Smith, 1990). The main constraints to the development of indigenous chicken production in rural Ethiopia include diseases, predation, lack of feed, poor housing, and to a lesser extent financial problems and management (Alemu, 1985; Permin et al., 2002). Among the disease of poultry, ectoparasites and gastrointestinal (GI)-helminthes plays an important role in reducing the total poultry production potential of the country.

Parasites are common in tropics, where the standard of poor husbandry practices and climatic conditions are favorable for the development of the parasites (Abebe et al., 1997). Most ectoparasites (for example, lice), stay

*Corresponding author. E-mail: yamilaya2008@gmail.com.

close to the host during their entire life cycle while others move from one host to the next quite frequently as ticks and mites (Yacob et al., 2009). Ectoparasites cause intense pain, irritation, slow weight gain, decreased egg production, and general poor and ill health (Urquhart et al., 1996, Kaufman, 1996). Lice are the most common ectoparasites of poultry, causing major economic loss to the productivity of animals (FaBiyi, 1980; Alamargot et al., 1985). Lice normally eat feather products except *Menacanthus stramineus*, which consumes blood. The virus of equine encephalomyelitis has been isolated from *M. stramineus* while the intracellular bacterium *Chlamydia psittaci* that causes an infection of birds known as orinthisis is isolated from *Menopon gallinae* (Calnek, 1991; Kaufman, 1996).

Raillietina echinobothrida and *Raillietina tetragona* are highly pathogenic while other species are not normally harmful unless the infection is extremely heavy, which cause significant decrease in production (Kaufman, 1996). *Ascaridia galli* is the most important nematode species of considerable economic importance. The large size of these nematode parasites may cause intestinal occlusion (Whitman and Brikford, 1989). The objectives of the present study were therefore, to identify the different species of ectoparasites and GI helminths of Fayoumi chickens in Debre Zeit Agricultural Research Center (DZARC) poultry farm.

MATERIALS AND METHODS

Description of the study site

The farm is situated in Debre Zeit town which is located at 9°N latitude and 4°E longitudes, at altitude of 1850 m above sea level in the central Oromia region. The area has an annual rainfall of 86.6 mm, of which 84% is in the long rainy season (June to September). The dry season extends from October to February. The mean annual maximum and minimum temperatures are 26 and 14°C, respectively, with mean relative humidity level of 61.3% (National Metrological Service Agency (NMSA), 2011).

Study design

The study design employed was a cross-sectional type, with the objective of determining the prevalence and level of infection of the major ectoparasites and GI-helminthes of Fayoumi chickens in DZARC poultry farm.

Study animals and management

A total of 212 apparently healthy and clinically sick and/or dead Fayoumi chickens, between the age of 6 ± 12 months (100) and 12±24⁺ months (112), raised under semi-intensive management system, were considered for the study purpose. Any suddenly dead found chicken was also collected and examined. All chickens were allowed for partial scavenging, being protected from scavengers by

open air wire mesh construction. A total of 80 males and 132 females Fayoumi chickens were selected randomly and then transported to the Faculty of Veterinary Medicine (FVM) Parasitology laboratory for detailed parasitological and necropsy examination.

Examination procedure

The birds were sacrificed by the method of cervical dislocation and subjected to parasitological examination according to the procedure described in Hansen and Permin (1998).

Postmortem examination

Examination for ectoparasites

Immediately after sacrificing, the skin from each individual bird was medially incised and detached from the underlying tegument together with the feathers. The legs and featherless areas of the body with any seborrhea or crustation were scraped for microscopic examination. Visible ectoparasites were collected using thumb forceps. Minute ectoparasites were detected using magnifying glass and collected by scraping from live chickens. The detected external parasites were preserved in 70% alcohol for identification. Collection of ectoparasites from the chickens was carried out by careful examination of the entire external body parts according to method of Yacob et al. (2009).

Gastrointestinal parasites isolation and identification

The viscera were detached from the mesentery and the GI tract was separated into smaller pieces. The oesophagus with crop, gizzard with proventriculus, and caeca with the rest of the intestine were kept in three separate containers. Each piece was identified and incised longitudinally. The worms were collected from the different intestinal pieces by washing with physiological saline in separate trays and placed in different beakers containing physiological saline. The parasites were examined in a stereomicroscope. The identification of GI helminths was carried out using the characters described by Olsen (19) and Soulsby (1982). Ectoparasites were identified based on the criteria set by Kaufman (1996), Calnek et al. (1991) and Soulsby (1982).

Data analysis

Appropriate data were collected from individual birds and stored in Micro Soft Excel spread sheet. Data analysis was carried out by using computer based Statistical package for social sciences (SPSS 11.5 statistical package). Pearson chi-square test was used for comparison of the possible variation between the study areas, and $p < 0.05$ was considered significant.

RESULTS

Ectoparasites prevalence

Out of the total 212 Fayoumi chickens examined from DZARC poultry farm, 2.35% were found harboring two

ectoparasites species: *M. stramineus* was found in three birds (1.41%) and *M. gallinae* was found in two birds (0.94 %). The difference in the prevalence of ectoparasites on the basis of sex (3.75% in males and 1.52% in females) and age groups (3% in 6 ± 12 months and 1.79% in 12 ± 24⁺ months), were found to be statistically not significant ($p > 0.05$) (Table 1).

Nematodes prevalence

The difference in the prevalence of nematode infection (*A. galli*) on the basis of sex (23.75% in males and 12.5% in females) and different age groups (37% in 6 ± 12 months and 13.99% in 12 ± 24⁺ months), were not statistically significant ($p > 0.05$) (Table 2).

Cestodes prevalence

Out of the total 212 Fayoumi chickens examined from DZARC poultry farm, 34 (16.04%) were found harboring different species from genus *Raillietina*. *R. echinobothrida* (8.49%) was the most prevalent cestode species followed *R. tetragona* (7.07%) while *R. cesticillus* (0.47%) was the least (Table 3). The difference in the prevalence on the basis of sex (16.25% in males and 13.36% in females) and age groups (12% in 6 ± 12 months and 19.64% in 12 ± 24⁺ months), were found to be statistically not significant ($p > 0.05$) (Table 3).

DISCUSSION

The present study showed the occurrence of only one nematode parasite, three cestodes species and two different ectoparasites in semi-intensive farm, with prevalence of 24.53, 16.04 and 2.35%, respectively.

In this study, a low prevalence of two ectoparasites species *M. stramineus* (3%) and *M. gallinae* (2%) was seen as compared to the previous findings in backyard chickens (Bersabeh, 1999; Hagos 2000) and scavenging chicken (Yacob et al., 2009). This is mainly because of the difference in management system, where a higher prevalence is expected in backyard scavenging system of production. *M. stramineus* and *M. gallinae* were also reported as the most prevalent and pathogenic arthropod parasites in Nigeria (FaBiyi, 1980). There were no statistically significant differences ($p > 0.05$) in the prevalence of ectoparasite infection between sex. However, the intensity of infection was relatively higher in males than females. The increased contact due to the fact that male chickens mate with several females, may lead to high degree of infestation (Kaufman, 1996). Generally, the result clearly indicated that a very low

prevalence of ectoparasite infection in the study farm was mainly due to the fact that ectoparasites were minimized by thorough cleaning of the house between batches of birds, whole flock replacement, smooth house construction, and use of mesh to keep out wild birds and keeping manure dry.

In this study, only one species of nematode that is, *A. galli* was identified with a prevalence of 24.53% (Figure 1). There was no statistically significant difference ($p > 0.05$) in the prevalence of *A. galli* infection in male (23.75%) and females (25%). However, the difference in the prevalence of *A. galli* in the two age groups (37% in 6 ± 12 months and 13.39% in 12 ± 24⁺ months) was found to be statistically significant ($p < 0.05$).

In previously conducted studies mainly involving backyard system of management, the prevalence of *A. galli* was very much higher, ranging between 47 to 67% (Asfaw, 1992; Teshome, 1993; Abebe et al., 1997; Bersabeh, 1999; Hagos, 2000) in different parts of Ethiopia. However, in Zimbabwe, the most prevalent nematode species in chickens was *Allodapa suctorica* (Permin et al., 2002) which was not found in the present study. The effects of *A. galli* on chickens include droppiness, emaciation, diarrhea and sometimes obstruction (Figure 1). In heavily parasitized chicken, it can also easily cause obstruction of intestine (Kaufman, 1996; Urquhart et al., 1996). Other pathological lesions such as pericarditis and pneumonia were also observed during necropsy (Figure 2). Among the three species of cestodes recovered, the most prevalent cestodes was *R. tetragona* (8.49%), followed by *R. echinobothrida* (7.07%) while *R. cesticillus* (0.47%) was the least encountered. There was no statistically significant difference ($p > 0.05$) in the prevalence of cestodes infection between sex (males 16.25% and females 13.65%) as well as age groups [(6 ± 12 months (12%) and 12 ± 24⁺ months (19.64%)]. The findings of the present study in terms prevalence of cestodes infection in general agreed with the previous studies in backyard chickens in Ethiopia (Bersabeh, 1999; Hagos, 2000) and in agreement with reports in Zimbabwe by Permin et al. (2002), as well as globally with reports of Permin and Bisgaard (1999). *R. echinobothrida* induces the formation of nodules in the intestinal wall, which can lead to confusion with the lesion of avian tuberculosis (Calnek, 1991; Urquhart et al., 1996). In the present study, similar nodular swellings were observed in the intestinal wall associated with *R. echinobothrida* and *R. tetragona* infection. The control of intermediate host (beetles, snails, slugs and flies) is one of the major tasks in the control of tape worm infection (Yacob et al., 2009).

The present study clearly indicated that Fayoumi chickens kept under semi-intensive management system in DZARC poultry farm (Figures 3; A and B) were exposed to a very low range of ectoparasites and relatively high

Table 1. Prevalence of ectoparasites in DZARC poultry farm based on sex and age of the examined birds

Lice species	No. examined	Positive Prevalence (%)	Prevalence in sex (%)		Prevalence in age; months (%)	
			M	F	6±12	12±24 ⁺
<i>M. stramineus</i>	212	3 (1.41)	2/80 (2.5)	1/132 (0.75)	2/100 (2)	1 /112 (0.47)
<i>M. gallinae</i>	212	2 (0.94)	1/80 (1.25)	1/132 (0.75)	1/100 (1)	1 /112 (0.47)
Total	414	5 (2.35)	3/80 (3.75)	2/132 (1.52)	3/100 (3)	2/112 (1.79)

Table 2. Prevalence of nematode (*A. galli*) infection in DZARC poultry farm based on sex and age.

Nematode species	No. examined	Prevalence in sex (%)		Prevalence in age; months (%)	
		M	F	6±12	12±24 ⁺
<i>A. galli</i>	212	19/80 (23.75)	33/132 (25)	37 /100 (37)	15/112 (13.39)

Table 3. Prevalence of cestodes infection in DAZRC poultry farm based on age.

Cestodes species	No. examined	Prevalence (%)	Prevalence in sex (%)		Prevalence in age; months (%)	
			M	F	6±12	12±24 ⁺
<i>R. tetragona</i>	212	18 (8.49)	4/80 (5)	11/ 132 (8.33)	8/100 (8)	10/112 (8.93)
<i>R. echinobothrida</i>	212	15 (7.07)	9/80 (11.25)	6/132 (4.54)	4/100 (4)	11/112 (9.82)
<i>R. cesticillus</i>	212	1 (0.47)	0/80 (0)	1/132 (0.76)	0/100 (0)	1 /112 (0.89)
Total	212	34 (16.04)	13/80 (23.75)	18/132 (25)	12/100 (12)	22/112 (19.64)



Figure 1. Intestinal obstruction due to *A. galli*.

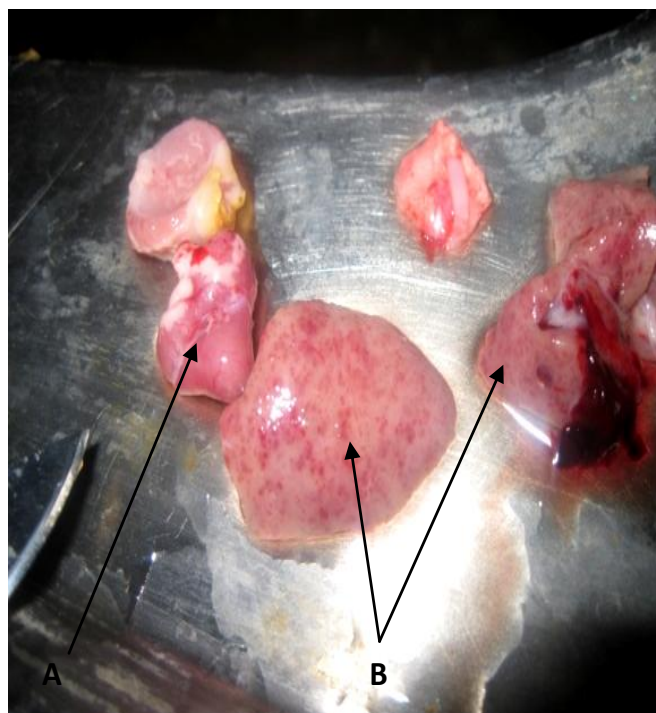


Figure 2. (A) Pericarditis and; (B) Pneumonia.

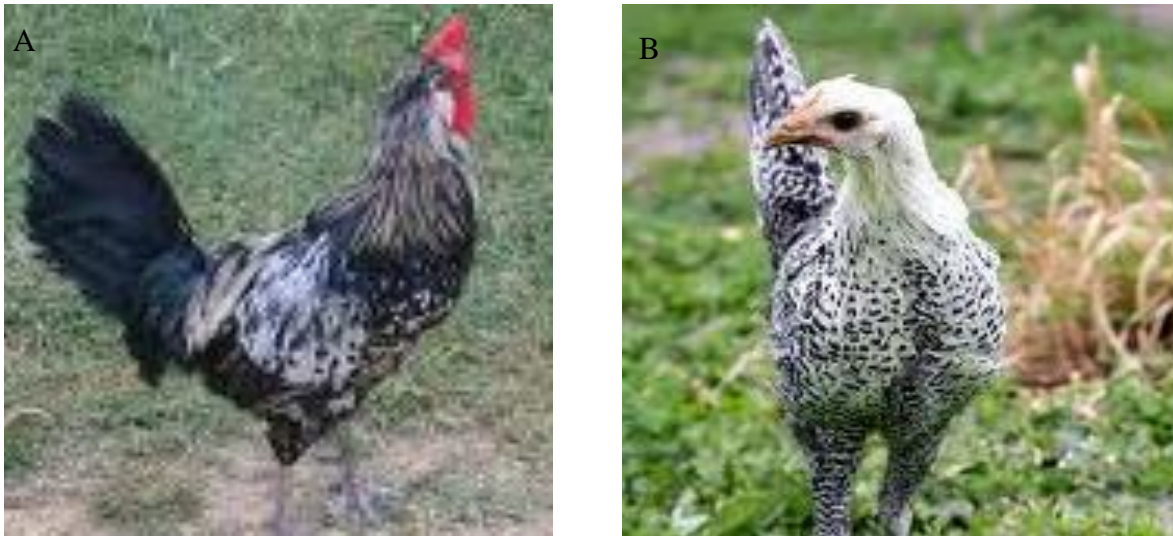


Figure 3. (A) Male Fayoumi; (B) Female Fayoumi.



Figure 4. Housing for semi-intensive Fayoumi breed management.

high number of GI-helminthes. Fayoumi chickens on the other hand were seen to have resistance to diseases and adapted to different environmental conditions.

Poultry production system in Ethiopia shows a clear distinction between the traditional low input system, on one hand and the modern production system, using relatively advanced technology, on the other hand. Traditional poultry production system operates indigenous chickens using a small sized flock without input and with

poor or no housing facilities (Tadelle, 1997). Given the management conditions and the magnitude of input provision, the connotation that “the productivity of local chickens in Ethiopia is poor” is virtually unfounded (Yilma et al., 1998).

Due to the high mortality rate and lack of adaptation to the rural environment in exotic breeds, professionals are arguing that the crossbreeding scheme underway in the country is not based on justified ground. Also, the merits

and demerits of both the existing and imported germplasms have not been studied thoroughly. The low prevalence of both ectoparasites and endoparasites in this study is probably related to less frequent exposure of chicken under this semi-intensive management system (Figure 5). Chickens are usually exposed to multiple parasitic infections under extensive management system as indicated in the results obtained by Yacob et al. (2009) conducted on scavenging chickens kept under traditional management practices.

Management has a great role in controlling both ectoparasites and GI-helminthes. In addition to good management, periodical deworming can also reduce the effect of parasitic diseases (Tadelle, 1997). The present study clearly indicated that Fayoumi chickens kept under semi-intensive management system in DZARC poultry farm were exposed to ectoparasites and GI-helminthes parasites; thus causing major constraints to poultry production. Since the Fayoumi chickens are exotic and recently introduced to Ethiopia, detail studies should be conducted to assess the impact of these ectoparasites and GI-helminthes on productivity of this chicken species.

REFERENCES

- Abebe W, Asfaw T, Genete B, Kassa B, Dorchies PH (1997). Comparative studies of external parasites and gastrointestinal helminthes of chickens kept under different management system in and around Addis Ababa (Ethiopia). *Rev. Med. Vet.* 148:497-500.
- Alamargot J, Mengistu A, Fesseha G (1985). Poultry diseases in Ethiopia. *Rev. Med. Vet.* 38 (2):130-137.
- Alemu Y (1985). Poultry production in Ethiopia. *World Poult. Sci. J.* 51:197-201.
- Asfaw T (1992). A survey of ectoparasites and gastro-intestinal helminthes of chicken kept under different management system in and around Addis Ababa. DVM thesis, Faculty of Veterinary Medicine, Addis Ababa University, Ethiopia. p. 22.
- Bersabeh T (1999). A survey of ectoparasites and gastro-intestinal helminthes of backyard chickens in three selected agro climatic zones in Central Ethiopia. DVM thesis, Faculty of Veterinary Medicine, Addis Ababa University, Ethiopia. p. 2.
- Calnek BW, Barness HJ, Bread CW, Reid WM, Yoder Jr. HW (1991). *Diseases of Poultry*, 9th Ed. Iowa State University Press/Amss. pp. 723-778.
- Ensminger ME (1992). *Poultry Science*, 1stEd. The interstate Printers and Publishers, Inc. Danville, Illinois, USA. pp. 1-23.
- Fabiyi JP (1980). Arthropod parasites of domestic fowl and guineafowl on the Jos Plateau, Northern Nigera. *Trop. Anim. Health Prod.* 12:193-194.
- Hansen J W, Permin A (1998). The Epidemiology, diagnosis and control of poultry parasites. FAO, Animal Health Manual. p.160
- Hagos A (2000). Survey on identification of major diseases of local chickens in three selected Agro climatic zones in Central Ethiopia. DVM thesis, Faculty of Veterinary Medicine, Addis Ababa University. Ethiopia. p. 2.
- Kaufman J (1996). *Parasitic infections of domestic animals; A diagnostic manual.* Basel, Berlin. pp. 338-394.
- NMSA (2011). Rainfall and temperature data of Debre Zeit. National Metrological Service Agency, Addis Ababa, Ethiopia.
- Olsen OW (1974). *Animal Parasites. Their Life cycles and Ecology*, 3rd Ed. University Park Press, Baltimore, MD. 562 pp.
- Permin A, Bisgaard M (1999). A general review on some important diseases in free range chickens. Poultry as a tool in Poverty Eradication and Promotion of Gender Equality. Proceedings of a Workshop, March 22-26, 1999. Tune Landboskole, Denmark. pp. 181-187.
- Permin A, Esmann JB, Hoj CH, Hove T, Mukaratirwa S (2002). Ecto-, endo- and haemoparasites in free-range chickens in the Goromonzi District in Zimbabwe. *Preventive Veterinary Medicine.* 45: 213-224.
- Smith AJ (1990). *Poultry- Tropical Agriculturist series.* CTA, Macmillan Publishers, London. pp. 162-178.
- Soulsby EJJ (1982). *Helminths, Arthropods and protozoa of domesticated animals*, 7th Ed. Bailliere Tindall and Casell Ltd. London. pp. 446-456, 630-645.
- Tadelle D (1997). Study on village poultry production system in the control highlands of Ethiopia. MSc. Thesis, University of Uppsala, Sweden. pp. 1-22.
- Teshome M (1993). Preliminary survey of gastro-intestinal helminthes in local chickens in and around Sodo. DVM thesis, Faculty of Veterinary Medicine, Addis Ababa University, Ethiopia.
- Urquhart GM, Armour J, Duncan JL, Dunn AM, Jennings FW (1996). *Veterinary Parasitology.* Churchill Livingstone Inc., New York. pp. 8-170.
- Whiteman CE, Brikford AA (1989). *Avian Diseases Manual.* American Association of Avian Pathologists, Pennsylvania. pp. 51-65.
- Yacob H Tolossa, Ziad D, Shafi, Asoke K. Basu (2009). Ectoparasites and gastrointestinal helminths of chickens of three agro-climatic zones in Oromia Region, Ethiopia. *Anim. Biol.* 59:289-297.
- Yilma J, Abebe W, Tadelle D, Tadelle K (1998). Study on epidemiology and control of *Ascaris* infection of back yard poultry in three selected crop production system zones in Ethiopia. Project document submitted to Ethiopia Science and Technology Commission (ESTC) (unpublished paper).

Full Length Research Paper

Major reproductive disorders of dairy cows in and around Asella town, Central Ethiopia

Hunduma Dinka

Institute of Animal Biotechnology and School of Agriculture, Adama Science and Technology University, P.O.Box 1457, Adama, Ethiopia.

Department of Animal Biotechnology, College of Animal Bioscience and Technology, Konkuk University, Seoul 143-701, Korea

Accepted 19 March, 2013

Reproductive disorders are one of the most important problems that affect the production and productivity of dairy cows. A cross sectional study was conducted to determine the prevalence of major reproductive disorders of dairy cows in and around Asella town, Central Ethiopia. For this purpose, a total of 82 owners and/or attendants of dairy cow herds were interviewed using structured questionnaire, and in addition, a total of 300 blood samples were randomly collected and analyzed from dairy cows in the study areas. Accordingly, the overall prevalence of reproductive disorders in the study area was 18.3%, with bovine brucellosis (32.9%), repeated breeding (26.8%) and abortion (14.6%) as the major reproductive disorders of dairy cows. It was also revealed that abortion is mostly common in exotic breeds (48.8%) and relatively less in local cows (9.8%) varying among parity and stage of pregnancy. Thus, it is recommended that strict animal husbandry especially animal feed and health management should be in place to minimize the risk of reproductive disorder occurrence in order to increase the production and productivity of dairy cows in the study area.

Key words: Reproductive disorder, bovine brucellosis, repeated breeding, dairy cows.

INTRODUCTION

Cattle production has been considered as the main component of agricultural development in most parts of sub-Saharan Africa. The overall cost of keeping cattle in terms of costs associated with the health care, nutrition and reproduction management, however, has not matched to their contribution to the livelihood and the economy of the people in the region. As in many countries, livestock, particularly cattle play multiple roles in Ethiopia being a source of milk, meat, hide, etc (Mekonnen et al., 1989). However, their productivity is low due to various constraints such as disease, feed, poor management and poor reproductive performance of indigenous zebu breeds (ILCA, 1988). Hence, income derived from livestock sector could not impart a

significant role in the economic development of the country (Mukasa-Mugerwa, 1989).

It has been reported that among infectious diseases, brucellosis is a common genital disease which induces abortion in animals and humans, continues to cause heavy economic losses and public health concern throughout the world (Arthur et al., 1996). It is transmitted to people by direct or indirect contact with infected animals or their products (FAO, 2010). Abortion in cattle is an important fertility problem causing a serious economic setback due to direct losses of concepts and consequent impairment of fertility. Moreover, the incidence of retained fetal membrane after birth is often high in *Brucella* infected herds (Mukasa-Mugerwa, 1989);

however, varieties of factors are responsible and it causes considerable losses at farm level, especially when the incidence exceeds the average rate of 5 to 10% (Arthur et al., 1996). In Ethiopia, even though dairy cattle are maintained under different production systems (ILCA, 1994; Shiferaw et al., 2003), the differences in management (production) systems and environmental conditions under which cattle are maintained could greatly affect the occurrence of reproductive disorders. In spite of this fact, little has been known about the magnitude of the major reproductive disorders in dairy cows in and around Asella town. Therefore, this study was designed to determine the prevalence of the major reproductive disorders of dairy cows in and around Asella town, Central Ethiopia.

MATERIALS AND METHODS

Study area

The present study was conducted in and around Asella town located in Oromia region, Central Ethiopia. Asella town, the capital of Arsi zone, is located at about 175 km Southeast of Addis Ababa at 7°57'N and 39°7'E with an altitude of 2430 m above sea level. Agricultural production system of the study area is of mixed crop and livestock production. Dairy farming using improved breeds is a common practice in urban and peri-urban areas (KARC, 2008).

Study population and their management

A total of 300 dairy cows and 82 households rearing dairy cows were included in this study. Classification of management systems was done based on the criteria adopted by Richard (1993). Accordingly, by taking the history of animals from owners as: semi-intensive management system for those animals that were kept indoor and fed and watered in their house/shade by cut and carry system while extensive management system for all animals that were kept outdoor during the day time and allowed to graze on a communal or private owned pasture land.

Study design and method of data collection

Questionnaire survey

A total of 82 households (owners and/or attendants of dairy cows) rearing dairy cattle were randomly selected and interviewed using structured questionnaire. In the survey, information on reproductive disorders as well as management system and particulars related to individual cow such as parity, breed, age, and history of abortion were collected and documented.

Blood sample collection and serological tests

A total of 300 dairy cows more than 6 months old were randomly selected, included for the study purpose where animals greater than 2 years represents adult animals (used for breeding purpose) while less or equal to 2 years of age represents young animals. Accordingly, about 10 ml of blood was collected from the jugular vein of each selected animal using plain vacutainer tubes and allowed to clot overnight at room temperature. The serum samples were separated and transported in iceboxes to National Veterinary

Institute (NVI), Debre Zeit, Ethiopia, and were stored at -20°C until testing. Serum samples were screened for antibodies for *Brucella* species using the Rose Bengal Plate test (RBPT). In brief, 30 µl of serum was mixed with an equal volume of antigen suspension on a glass plate and was agitated. After 4 min of rocking, any visible agglutination was considered as positive (OIE, 2008). Agglutinations were recorded as 0, +, ++ and +++, according to the degree of agglutination (Millan, 1990). A score of 0 indicates the absence of agglutination; + indicates barely visible agglutination; ++ indicates fine agglutination; and +++ indicates coarse clumping. Samples with no agglutination (0) were recorded as negative while those with +, ++ and +++ were recorded as positive. RBPT *Brucella* antigen (Institute Pourquier, France), positive control and negative control sera (National Veterinary Institute, Debre Zeit, Ethiopia) were used for the RBPT.

Data analysis

The data collected from the field were entered into a computer on a Microsoft Excel spreadsheet and analyzed using Statistical Package for Social Sciences Inc. (SPSS, 2010). Descriptive statistics such as mean, range, frequency and percentage were used to summarize and present the results. Categorical variables (breed, age, parity number, stage of pregnancy and others) were expressed in percentages. The seroprevalence of *Brucella brucellosis* was calculated as the number of animals testing positive by the RBPT, divided by the total number of animals tested. Prevalence of reproductive disorders of dairy cows was determined based on the proportion of the respondents involved in the interview. The degree of association between or among each risk factor was assessed using Chi-square (χ^2) test (<http://www.fourmilab.ch/rpkp/experiments/analysis>). For all analyses, a p-value of less than 0.05 was taken as significant.

RESULTS

Socioeconomic characteristics of the respondents and animal husbandry

The educational level of the respondents involved in dairy cattle rearing in the study area were diverse from literate to illiterate people in that they do have degree (2.4%), diploma (7.3%), grade 9 to 12 (29.3%), grade 1 to 8 (40.2%) and no education level (20.7%). There are no female respondents having higher educational level (diploma and degree) and majority of the illiterates were female (70.6%) when compared with male respondents (29.4%) engaged in dairy cattle rearing. Accordingly, 75.6% of the respondent's dairy cattle are reared for both home consumption (23.2%) and market (1.2%) purposes. Individuals involved in milk selling sell a litter of milk on the average by 4.5 Ethiopian Birr (ETB) which is very cheap when compared with a litter of high land water in terms of its nutritional value.

The farm type in majority of the respondent is dairy (87.8%) and some of them mixed (dairy and beef) type of farms categorized under small scale dairy farm in different kind of management practices such as extensive (20.7%), semi-intensive (46.3%) and intensive (33.0%) system. Most of the farmers in the study area use cross breed (64.6%), local breed (22.0%) and both local and

cross breed cows (9.8%), where some of them use pure exotic breeds (3.7%) for their dairy purpose. The types of the cross bred dairy cows in the study area were Holstein Friesian with Arsi (75.6%) and Borena (24.4%) breeds. In majority of the cases, women and husbands were the ones involved in dairy cattle husbandry such as feeding, milking, herding and others (Table 1).

This study showed that 4.9% of the respondents do not have house or fenced enclosure (barn) for their animals. The most common housing systems for dairy cattle in the study area were indoor (separate house) and outdoor (tether) system, 69.5 and 25.6%, respectively where their sanitary condition vary from poor, medium to excellent accounting 39.0, 56.1 and 4.9%, respectively. Most (81.7%) of the respondents on the average possess 1 to 5 dairy cattle, whereas 15.9% of them have 6 to 10 cattle.

Reproductive disorders of dairy cows in the study area

The three top major constraints of dairy cattle in the study area were animal feeds, animal diseases and reproductive disorders figuring 40.2, 30.5 and 18.3%, respectively, where bovine brucellosis (32.9%) and repeated breeding (26.8%) were the major reproductive disorders (Figure 1).

Participants were asked the type of breeding system they were accustomed to breed their dairy cattle. Accordingly, most of the respondents (62.2%) used artificial insemination whereas others were using natural mating (29.3%) and both type (8.5%) of breeding system. From their practice and experience, most of the respondents prefer the utilization of artificial insemination services (65.9%) than natural mating (bull services) (34.1%) to breed their dairy cattle even though it is only 37.8% of the respondents who know, as there is a risk of disease transmission in using bull or artificial insemination services.

In the study area, it was reported by 14.6% of the respondents that they encountered abortion in their dairy cattle. It was also revealed that abortion is mostly common in exotic breeds (48.8%) and relatively less in crossbred, local cows and all breed types figuring 28.0, 9.8 and 13.4%, respectively where it also varies among parity and stage of pregnancy (Table 2). According to 53.7% of the respondents, by the time they encounter abortion cases in their herd they do not take any measure, whereas some of them take them to veterinary clinic and traditional healers, 25.6 and 20.7%, respectively. A relatively high proportion (73.2%) of the interviewed household members in the study population reported consumption habit of milk and milk product in their family by boiling, whereas 26.8% of them as raw. About three fourth (75.6%) of the respondents do not have awareness on bovine brucellosis as it can be transmitted to human through raw milk and milk products

consumption from infected cows. Similarly, 79.3% of the respondents do not have awareness on bovine brucellosis as it can also be transmitted to human through handling aborted fetus and other reproductive organ discharges from infected cows.

Blood sample collection and serological test results

The overall individual animal level sero-prevalence, 5.3% (16/300), of bovine brucellosis was recorded from the study area on the basis of RBPT. The higher prevalence was detected in Pluriparous females than primiparous animals.

DISCUSSION

This study showed that 18.3% of dairy cattle in the study areas were affected by either one or more reproductive disorders based on questionnaires to the owners. This is in close agreement with the questionnaire survey result report by Gizaw et al. (2007) and Molalegne and Shiv (2011) from Adama and Bedelle accounting for 25.81 and 24.8%, respectively.

Repeated breeding can be caused by a number of factors, including sub-fertile bulls, endocrine imbalance, malnutrition, reproductive tract infections and poor management practices such as wrong time of insemination or faulty heat detection, inappropriate semen handling and insemination techniques (Arthur et al., 1996). The higher proportion of repeated breeding (26.8%) found in the present study is closer to the 21.8% prevalence rate reported by Mekonnen (2000) from Ada'a district of Central Ethiopia, but higher than the 8.9 and 4.6% prevalence rate reported by Gizaw et al. (2007) and Tigre (2004) from Adama and Holetta, respectively.

The overall individual animal level seroprevalence, 5.3% (16/300), of bovine brucellosis was recorded from the study area on the basis of RBPT. This is in agreement with previous report, 8.26%, by Bayleyegn (1989) from the same area using RBPT.

In the study area, abortion in dairy cattle was found to be more common in pluriparous cows. Pluriparous, primiparous and at any other parity status accounted for 67.1, 18.3 and 14.6%, respectively. It was also reported by 14.6% of the respondents' as they encountered abortion mostly at third trimester and any stage of pregnancy, 45.1 and 36.6%, respectively, in their dairy cattle. This is inconsistent with the previous findings (Tadesse, 1999; Oumer, 2003; Mamo, 2004) which is possibly due to the repeated exposure of the genital tract of pluriparous cows as their age increases to environmental risk factors that can impart uterine infection. The prevalence, 14.6%, of abortion recorded by questionnaire survey in this study is similar to the 13.0% reported by Molalegne and Shiv (2011) in and around

Table 1. Family members responsible for dairy animal husbandry.

Type of activity	Family member responsible for dairy animal husbandry					
	Husband (%)	Wife (%)	Son (%)	Daughter (%)	Daily laborer (%)	All family (%)
Feeding	9 (11)	33 (40.2)	9 (11)	6 (7.3)	7 (8.5)	18 (22.0)
Milking	8 (9.8)	64 (78.0)	-	2 (2.4)	8 (9.8)	-
Breeding	47 (57.3)	25 (30.5)	7 (8.5)	-	3 (3.7)	-
Herding	16 (19.5)	28 (34.1)	24 (29.3)	4 (4.9)	10 (12.2)	-
Health care	49 (59.8)	27 (32.9)	6 (7.3)	-	-	-
Housing	45 (54.9)	25 (30.5)	2 (2.4)	6 (7.3)	4 (4.9)	-

Table 2. Abortion at different stage of pregnancy and parity in and around Asella town.

Risk factor	Group (Categories)	No. of cases of abortion	Prevalence (%)
Stage of pregnancy	First trimester stage	8	9.8
	Second trimester stage	7	8.5
	Third trimester stage	37	45.1
	At any stage	30	36.6
Parity status	Primiparous	15	18.3
	Pluriparous	55	67.1
	At any stage	12	14.6

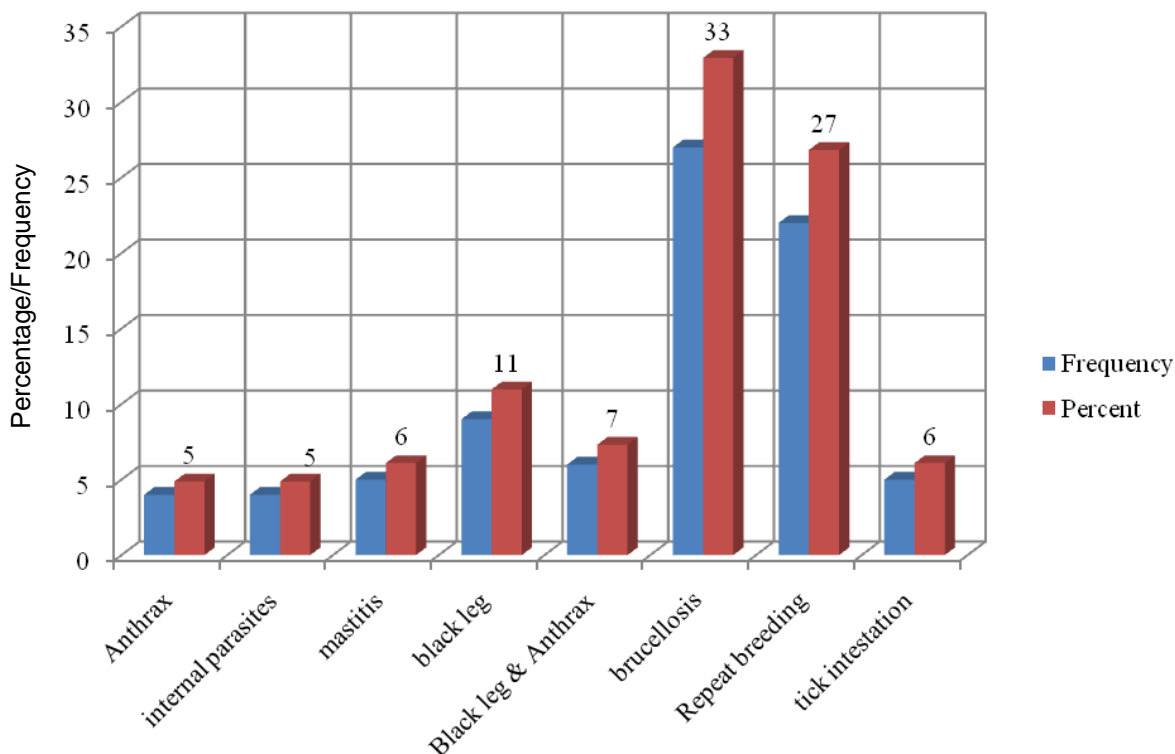


Figure 1. Major reproductive disorders and animal diseases in the study area.

Bedelle and significantly higher than the 2.23, 3.19, 5.33, and 6.30% reported earlier (Gizaw et al., 2007; Oumer, 2003; Shiferaw, 1999; Kassahun, 2003) from Adama, Kombolcha, Holetta and Hawassa, respectively. Higher percentage of abortion may be attributed, because Arsi zone is one of the districts in Ethiopia where dairy production using high yielding breeds of cattle has been started earlier, due to its agro-ecology that fairly favors the introduction and development of crossbred dairy cattle, where the problem is more common in exotics than local animals. Abortion is a frequent complication of brucellosis in animals, where placental localization is believed to be associated with erythritol, a growth stimulant for *Brucella abortus* (WHO, 2006).

Conclusively, reproductive disorder problems were prevalent in smallholder dairy cows in the study area calling for formulation of strategic control measures, including health education about the disease transmission, in order to reduce associated reproductive wastage and their risks factors.

REFERENCES

- Arthur GH, Noakes DE, Pearson H (1996). Veterinary Reproduction and Obstetrics. (Therigenology) 6th Ed. Baillier Tindall UK. pp. 83-85.
- Bayleyegn M (1989). Seroepidemiological survey of bovine Brucellosis in Arsi region. A DVM thesis, Faculty of Veterinary Medicine, Addis Ababa University, Debre Zeit, Ethiopia.
- FAO (2010). *Brucella melitensis* in Eurasia and the Middle East. FAO Animal Production and Health Proceedings. No. 10. Rome.
- Gizaw M, Bekana M, Abayneh T (2007). Major reproductive health problems in smallholder dairy production in and around Nazareth town, Central Ethiopia. Vet. Online Int. J. Vet. Med. <http://www.fourmilab.ch/rpkp/experiments/analysis/chiCalc.html>, Chi-Square Calculator.
- International Livestock Center for Africa - ILCA (1988). Animal reproduction for African countries. Report of a joint seminar by International Foundation for Science and Swedish International Program on Animal Production, ILCA, Addis Ababa, Ethiopia.
- International Livestock Center for Africa - ILCA (1994). Annual report and program highlights. International Livestock Center for Africa. Addis Ababa, Ethiopia.
- KARC (2008). Kulumsa Agricultural Research Center. Annual Report of KARC, Asella, Ethiopia. p. 6.
- Kassahun M (2003). Major clinical reproductive problems of smallholder dairy cows in and around Awassa. DVM thesis. Faculty of Veterinary Medicine, Addis Ababa University, Debre Zeit, Ethiopia.
- Millan Mac A (1990). Conventional serological tests. In: Nielson K., Duncan J.R., (eds.): Animal brucellosis, Boston, CRC Press.
- Mamo T (2004). Study on major postpartum reproductive problems of smallholder dairy cows in and around Debre Zeit. DVM Thesis, Faculty of Veterinary Medicine, Addis Ababa University, Debre Zeit, Ethiopia.
- Mekonnen D (2000). Study on major infertility problems of crossbred dairy herds in Ada'a district of central Ethiopia. DVM thesis. Faculty of Veterinary Medicine, Addis Ababa University, Debre Zeit, Ethiopia.
- Mekonnen G, Forsido T, Gebre-wold A, Dagnachew Z, Anteneh A (1989). The Ethiopian Livestock Industry: Retrospect and prospect. IAR proceedings, Addis Ababa, Ethiopia, pp. 9-19.
- Molalegne B, Shiv P (2011). Study on Major Reproductive Health Problems in Indigenous and Cross Breed Cows in and Around Bedelle, South West Ethiopia. J. Anim. Vet. Adv. 10(6):723-727.
- Mukasa-Mugerwa E (1989). A review of reproductive performance of female *Bos indicus* (Zebu) cattle. ILCA monograph No. 6. ILCA, Addis Ababa.
- OIE (2008). Bovine Brucellosis. Manual of Diagnostic Tests and Vaccines for Terrestrial Animals. Office international des Epizooties, Paris.
- Oumer I (2003). Study on major reproductive health problems of smallholder dairy farms in and around Kombolcha. DVM thesis. Faculty of Veterinary Medicine, Addis Ababa University, Debre Zeit, Ethiopia.
- Richard W (1993). Dairying. Tropical Agriculturalist, 1st Ed. Macmillan Press London. pp. 43-48.
- Shiferaw Y (1999). Fertility status of dairy cows under different production systems in Holetta central Highland of Ethiopia. MSc Thesis, Addis Ababa University and Freie Universitat Berlin, Faculty of Veterinary Medicine, Addis Ababa University, Debre Zeit, Ethiopia.
- Shiferaw Y, Bekena M, Tenhagen BA, Kassa T (2003). Reproductive performance of crossbred dairy cows in different production systems in the central highlands of Ethiopia. Trop. Anim. Health Prod. 35(6):551-561.
- SPSS (2010). Statistical Package for Social Sciences Inc. version 17.
- Tadesse M (1999). Major post partum reproductive problems in Holetta research station and smallholders' dairy cattle. DVM thesis. Faculty of Veterinary Medicine, Addis Ababa University, Debre Zeit, Ethiopia.
- Tigre W (2004). Major clinical reproductive health problems of dairy cows in and around Holleta. DVM thesis. Faculty of Veterinary Medicine, Addis Ababa University, Debre Zeit, Ethiopia.
- WHO (2006). Brucellosis in humans and animals. WHO Press, 20 Avenue Appia, 1211 Geneva 27, Switzerland.

Full Length Research Paper

Major prepartum and postpartum reproductive problems of dairy cattle in Central Ethiopia

Angesom Hadush^{1,3*}, Adem Abdella² and Fikru Regassa¹

¹College of Veterinary Medicine and Agriculture, Addis Ababa University, P. O. Box 34, Debre Zeit, Ethiopia.

²College of Veterinary Medicine, Haramaya University, P. O. Box 138, Dire Dawa, Ethiopia.

³Faculty of Veterinary Medicine, Samara University, P. O. Box 132, Samara, Ethiopia.

Accepted 5 April 2013

A survey to determine major prepartum and postpartum reproductive problems of dairy cattle was carried out in three selected dairy farms in Debre Zeit town. Retrospective data analysis together with survey on major prepartum and postpartum reproductive problems were carried out through regular clinical follow up. A retrospective analysis of clinical data collected from a total of 711 cows in three farms was done and 44.3% of the cows were found with major prepartum and postpartum reproductive problems. Postpartum anestrus (12.9%) was the major reproductive problem followed by repeat breeding (11.4%) in the retrospective study. A total of 104 cows were used in the regular follow up and 33.6% (n =35) were found to be affected either with one or more of clinical reproductive problems. Postpartum anestrus (12.5%) was found to be the leading reproductive problem followed by repeat breeding (10.6%), metritis (8.7%), abortion (6.7%), retained placenta (3.8%), dystocia (2.9%) and prolapse (1.9%). Statistical analysis was performed to evaluate the difference in prevalence of the major reproductive problems on the basis of parity and body condition score. Hence, the impact of increasing parity on the occurrence of reproductive problems was examined and there is a direct relationship between increasing parity and prevalence of the reproductive problems with a highly significant variation ($P<0.01$) between primiparous and pluriparous cows. There is an inverse relationship of body condition and prevalence of reproductive problems with a highly significant variation ($P<0.01$). This study demonstrated that anestrus, repeat breeding, metritis and abortion were noticed as the most common major reproductive problems in the study farms in Debre Zeit town, Central Ethiopia.

Key words: Anestrus, postpartum, prepartum, repeat breeder, reproductive problems, survey.

INTRODUCTION

Livestock are vital sources of economic and social support for millions of poor people throughout Africa. Although Ethiopia is known to have a large livestock population, the contribution of livestock does not commensurate with the number of animals or the extent of land resources used. The major contributing factors that have impeded the full exploitation of cattle potential in Ethiopia are seasonality and quality of nutrition, low genetic potential for production in indigenous breeds,

occurrence of disease and parasites, poor livestock management systems, and large socio-economic factors (Tegegne, 1989; International Livestock Centre for Africa (ILCA), 1998). Majority of Ethiopian cattle have been reported to be indigenous breeds and small non-descript Zebu types (Mukasa-Mugerwa, 1989) that are poor in major economically important traits but they have got adaptation to tropical climates (Tegegne, 1989).

Cross breeding with improved exotic dairy breeds in

*Corresponding author. E-mail: meryangieboy@gmail.com.

wide scale has been introduced as an option some 36 years back (Brannang et al., 1980) for upgrading the genetic potential of the indigenous Zebu cattle and subsequently to improve the dairy sector in Ethiopia. Moreover, the development and use of artificial insemination (AI) techniques have also revolutionized cattle production and genetic improvement, particularly in the dairy sectors (Tegegne et al., 1995). The performances of animals depend not only on their genetic merit, but also on other factors like nutrition, management, health and environment. On the other hand, reproduction is a vital factor in determining the efficiency of animal production (Peters and Ball, 1995). Thus, the success of cross breeding programme needs to be monitored regularly, by assessing the performances of crossbred cows under the existing management system.

Ethiopia is a country which is known for its highest livestock population from Africa. However, its level of productivity is low due to the constraints of disease, nutrition, poor management and poor performance of indigenous breeds. These constraints also result in poor reproductive performance of dairy cattle. Among the major problems that have a direct impact on reproductive performance of dairy cows are: abortion, retention of the fetal membrane (RFM) and metritis. These results in considerable economic losses to the dairy industry due to slower uterine involution, reduced reproductive rate, prolonged inter conception and calving interval, cost of medication, drop in milk production, reduced calf drop, and early depreciation of potentially useful cows (Thomas, 1989; Barnouin and Chacoranc, 1992; Merga, 1992).

Although, the major reproductive problems are greatly responsible for high economic loss in the dairy industry, there is scarcity of reliable information regarding the reproductive performances of dairy cows in subsistence dairy farms in the tropics, particularly in Ethiopia. Information pertaining to reproductive performance and interacting factors is of paramount importance primarily to the livestock owners and also to the extension agents, veterinarians and researchers. Moreover, it can assist in the development of strategies and prioritization of possible intervention options for performance improvement. Accordingly, the objective of this study was to identify major prepartum and postpartum reproductive problems of dairy cattle in the selected farms and to compare their relative occurrences.

MATERIALS AND METHODS

Study area

This study was conducted in Debre Zeit town which is located 47 km South East of Addis Ababa, Ethiopia. The town lies between 9°N latitude and 40°E longitudes and has an altitude of 1950 m above sea level. The rainfall is bimodal with an annual rainfall of 1151.6 mm of which 84% is during the long rainy season covering June to September and the remaining in the short rainy season

extending from March to May. The dry season extended from October to February. The mean maximum and minimum temperature of the area are 34.7 and 8.5°C, respectively, and mean relative humidity is 61.3%. Mixed farming system followed in the area, crop and livestock production are an intensive type of production (NMSA, 2004).

Study animals

In this study, all animals which gave birth between first November, 2009 and end of February, 2010 were used. The cows used in this study were Holstein Friesian of different parity, but kept under similar production system (intensive type of management) in selected farms in Debre Zeit town.

Study design

The study had two parts; the first study was a retrospective data collection and analysis to establish the prevalence and to identify the major reproductive disorders in the selected farms. The second part of the study was a regular clinical follow up on purposively selected dairy cows kept by the selected dairy farms.

Data collection

Secondary data

Secondary data was collected from the record books kept by the farms in the last three years; from January, 2006 to December, 2008 to identify the major prepartum and postpartum reproductive problems and to assess their prevalence in the selected farms.

Regular follow up

A regular visit of the farms was carried out to collect data on the major prepartum and postpartum reproductive problems of dairy cows. The study animals were identified by their tag number/ID, breed, parity and followed up their gestation time until delivery and 85 days post delivery by referring their individual case book for time of delivery. During gestation, at and following calving, cows were closely observed; their body temperature measured and feed consumption monitored. After delivery, cows were examined for the presence of retained fetal membrane left hanging in the vulva in the first 24 h and if any abnormal vaginal discharge occurred. Cows with abnormal vaginal discharge were subjected to vaginoscopy to determine the type and nature of the vaginal discharge according to Bekena et al. (1994a).

Finally, parturient cows were grouped in to those giving birth without any problem and those giving birth with problems according to the following definitions.

Abortion: Is the expulsion of a dead fetus of recognizable size at any stage of gestation (Robert, 1986; Bekana et al., 1994a, b; Noakes, 1986).

Dystocia: A condition in which the first or especially the second stage of parturition was prolonged markedly for more than 6 h and the cow required assistance (Robert, 1986; Stevenson and Call, 1988; Noakes, 1986).

RFM: A lack of expulsion of the placenta with in the first 24 h after calving (Robert, 1986; Arthur et al., 1989; Bekana et al., 1994a, b).

Metritis: An inflammation of the uterine wall characterized by reddish brown, white or whitish to yellow mucopurulent, with fetid vaginal discharge along with thickness of uterine wall at transrectal palpation (Morrow, 1980; Robert, 1986; Bekana et al., 1994a, b).

Repeat breeders: A cow or a heifer that failed to conceive for three or more consecutive services time (Morrow, 1980; Allenstein, 1981; Robert, 1986; Noakes, 1986; Shiferaw et al., 2003).

Anestrus: Cows which failed to show clinical heat signs for 90 days or more after parturition (Hafez, 1993; Bekana et al., 1994a, b).

Uterine prolapse: The coming out of uterus through the vulva commonly shortly after parturition and hanged out with the inner surface outer most (Morrow, 1980; Noakes, 1986).

Vaginal prolapse: The protrusion of the vagina and sometimes with the cervix through the vulva (Noakes, 1986; Robert, 1986).

Body condition scoring

For all of the animals under study, body condition was scored in order to assess the nutritional status of the animal and the prevalence of post parturient reproductive problems. Therefore, animals were grouped in to 0, 1, 2, 3, 4 and 5 body condition scores according to Richard (1993).

Data management and statistical analysis

Both the retrospective data and the regular clinical follow up result was entered to a Microsoft Excel sheet 2007 and analyzed using a software SPSS[®] version 16. The different parameters (that is, parity, management and body condition score) that were considered during the study period were analyzed using the Chi-square technique. The possible association of metritis with abortion, dystocia and RFM was also tested using these techniques.

RESULTS

In the retrospective study, from a total of 711 assessed recorded data on pregnant and parturient cows during the last three years, 44.3% (n=315) were found with major prepartum and postpartum reproductive problems. Postpartum anestrus accounted for the highest prevalence of 12.9% followed by repeat breeding, abortion, dystocia, RFM, metritis and vaginal/uterine prolapse that accounted for 11.4, 6.6, 4.2, 3.5, 3.5 and 0.7%, respectively in the three farms.

During the survey using regular follow up, a total of 35 (33.6%) cows were diagnosed to be affected at least by one of the major prepartum and postpartum reproductive problems. The average prevalence of abortion, dystocia, RFM, prolapse, metritis, anestrus and repeat breeding in the three farms during the regular follow up was found to be 6.7, 2.9, 3.8, 1.9, 8.7, 12.5 and 10.6%, respectively. Out of the total 35 affected cows, some 16 (45.7%) of them were diagnosed to have more than one reproductive problems.

The relative occurrence of abortion on the base of stage of gestation was assessed and the corresponding

results in the first, second and third trimester was 1 (14.3%), 2 (28.6%) and 4 (57.1%), respectively. This result indicates that more than half of the abortion cases occur in the third trimester.

The dairy cows under this study were all exotic (HF) breeds kept under the same management (intensive) system. But other risk factors such as parity of a cow and body condition score at calving were considered to assess its association with the occurrence of the reproductive problems. Accordingly, the possible impact of increasing parity on the occurrence of the post parturient reproductive problems was examined and there is a direct relationship of increasing parity and the prevalence of the post parturient reproductive problems with a highly significant ($P < 0.01$) result (Table 1). The influence of body condition score at calving on the occurrence of the major post parturient reproductive problems was assessed (Table 1) and the result showed that there is an inverse relationship of body condition and prevalence of the post parturient reproductive problems. The variation in prevalence among the different body condition score was found statistically highly significant ($P < 0.01$). Although an attempt was also made to see sanitation of farms as a possible cause of reproductive problems; this was not statistically significant ($P > 0.05$).

Analysis of the result was also made to observe the relationship of clinical metritis cases with the other predisposing factors. The result showed that 7 (77.8%) of the clinical metritis were developed as a sequel to abortion, dystocia and RFM accounting for 3 (33.3%), 1 (11.1%) and 3 (33.3%) respectively. Only 2 (22.2%) of the total cases were developed after normal parturition.

The association of metritis with abortion, dystocia and RFM was tested statistically and it was found out that metritis was not significantly associated ($P > 0.05$) with these predisposing factors (Table 2).

DISCUSSION

The prevalence of anestrus observed in this study is in line with the results of Zewdu (1992) and Amene (2006) who reported a prevalence of 0.7 to 20.4%, and 10.2% in ILCA herds in Debre Zeit and at Alage dairy farm, respectively. This prevalence is lower than the range indicated by Befekadu (2007) and Darwo and Zerbini (1998) as 16.4 and 24% in cross bred dairy cows in Debre Zeit and in central high lands of Ethiopia, respectively. This might be due to the breed and management system differences. The 10.6% prevalence of repeat breeding found in this study agrees with the 5 to 15% reported by Puntam (1986), 9.6% reported by Amene (2006) and 13% reported by Micheal (2003). The higher repeat breeding cases recorded in pluriparous cows (63.6%) than those of primiparous (36.4%) is in agreement with the finding of Wolf (1993) who described the decline in fertility of cows with an increase in parity.

Table 1. Prevalence of prepartum and postpartum reproductive problems and its association with risk factors.

Risk factor	No. of cows examined	No. of cows with RP	No. of cows with normal parturition	Percent of affected cows	χ^2 Value	DF	P-value
Parity							
Primiparous	31	17	14	54.8	8.88	1	0.003
Pluriparous	73	18	55	24.7			
Total	104	35	69	33.6			
Sanitation							
Good	70	20	50	28.6	2.48	1	0.116
Poor	34	15	19	44.1			
Total	104	35	69	33.6			
BCS							
0	3	2	1	66.7	18.72	5	.002
1	12	8	4	66.7			
2	28	14	14	50.0			
3	34	8	26	23.5			
4	22	3	19	13.6			
5	5	0	5	0			
Total	104	35	69	33.6			

Table 2. Association of clinical metritis with the other predisposing factors of cows in the selected farms.

Predisposing factors	Cases with clinical metritis	Cases without clinical metritis	Total
Abortion	3 (42.9)	4 (57.1)	7
Dystocia	1 (33.3)	2 (66.7)	3
RFM	3 (75.0)	1 (25.0)	4
Total	7 (50.0)	7 (50.0)	14

$\chi^2=1.48$, DF=2, P>0.05.

The problem of repeat breeding could be possibly due to wrong time of heat detection and insemination as well as problems related to semen handling and insemination techniques (Robert, 1986).

Prevalence of metritis recorded in this study (8.7%) agrees with that of Micheal (2003) who reported a prevalence of 11.3%. However, a lower prevalence of metritis was obtained in this work compared to the results of Gebremariam (1996), Ebrahim (2003) and Amene (2006) who have reported 19.6, 18.7 and 28.5%, respectively. This could be possibly due to differences in breed and management systems. Another important clinical reproductive problem in this study was abortion, which accounted for 6.7%. This figure is similar to the results of Tekelye et al. (1991, 1992a), Zewdu (1992) and Gebremariam (1996) who have reported a prevalence of 1.7 to 20.2%, 1.0 to 8.4%, 1.5 to 7.8% and 6.1% in three state dairy farms in central high lands of Ethiopia, in indigenous cattle at Abornessa farm, in Debre Zeit ILCA herds and in extreme Northern Ethiopia, respectively.

This finding was also similar with the report of Awad et al. (1977) who obtained an abortion rate of 6.52% in Egypt. At Ghibe farm, Tekelye et al. (1992b) reported a prevalence of 2.6 and 2.0% in 1988 and 1989, respectively. This low abortion rate may be the effect of vaccination against brucellosis as it is indicated by the author.

The other results of reproductive problems considered in this study were 2.9% dystocia, 3.8% RFM and 1.9% prolapse which are lower when compared with most of the earlier reports. 2.9% prevalence of dystocia is in agreement with Zewdu (1992), Amene (2006) and Gebremariam (1996) who reported a prevalence of 2.2 to 4.4, 3.1 and 3.7%, respectively. But it is lower than the 9.7% reported by Micheal (2003) and 5.8% by Tadelech (2004) in small holder dairy cows in and around Awassa and Debre Zeit, respectively. This wide variation in the prevalence of dystocia is due to the fact that it is influenced by factors such as, the age and parity of the dam as well as breed of the sire as has been reported

earlier (Morrow, 1980; Noakes, 1986). The 3.8% prevalence of RFM is in line with the reports of Morrow (1980) and Paisley et al. (1986) who reported a morbidity range of 3 to 12% and 1.96 to 55%, respectively. But the prevalence of RFM in this study was lower than the reports of Tadelech (2004), Gebremariam (1996), Tekelye et al. (1992a), Amene (2006) and Ebrahim (2003) who reported 14.3, 16.8, 15.5, 26.6 and 7.1 to 28.9%, respectively. The lower prevalence of RFM in this study could be due to lower rate of dystocia and management difference especially feeding and sanitation.

Similar to the previous findings (Gebremariam, 1996; Melkamu, 1999; Desalegne, 2000; Micheal, 2003; Ebrahim, 2003; Tadelech, 2004), the present study confirms that pluriparous cows are more affected by postpartum reproductive problems than the primiparous. This might be possibly due to repeated exposure of pluriparous genital tract to environmental risk factors, which indeed, caused uterine infection. Moreover, in this study, the prevalence of post parturient reproductive problems had highly significant inverse relationship ($P < 0.01$) with the body condition of the animals. The higher prevalence of reproductive problems found in animals of poor body condition may be attributed to the fact that such animals do have weak expulsive force to drop their after birth or to give birth without assistance which is followed by secondary complication. However, animals in good body condition have been reported to have better ability to meet the energy requirement of parturition, lactation and involution of uterus than a cow in poor body condition and hence, are better resistant to the possible infections that may be the result than a cow in poor body condition (Hafez, 1993).

Finally the association of metritis with the other reproductive problems (that is, abortion, dystocia and RFM) as a predisposing factors was not statistically significant ($P > 0.05$). In fact, various authors (Bretzlaff et al., 1982; Markusfeld, 1984; Noakes, 1986; Paisley et al., 1986; Robert, 1986; Arthur et al., 1989; Barnouin and Chacornac, 1992; El-Din et al., 1995) all reported the presence of high degree of association between metritis and the aforementioned predisposing factors. In this study, 3 (75.0%) of the RFM cases develop metritis and additionally 7 (77.8%) of the metritis cases develop postpartum anestrus which is in agreement with that of Allenstein (1981) who indicated that RFM of long course is the main cause of metritis and metritis in turn has long been known to create anestrus condition in dairy cows.

CONCLUSION AND RECOMMENDATIONS

The result of the present study indicated that postpartum anestrus and repeat breeding are the leading reproductive problems followed by metritis and abortion, respectively. In general, the prevalence of the major reproductive problems in the study farms is high beyond the economically tolerable limit. This might be accounted

to the poor management at calving, poor farm hygienic practices and lack of regular clinical follow up by animal health professional in the farms. Hence, improvement of hygienic condition of the farms and proper care, management and handling of cows at the time of parturition should be practiced. Routine and periodical examination of cows during postpartum period is essential, since most cows acquire uterine infection during this period.

ACKNOWLEDGEMENTS

The authors are thankful to the owners, managers and workers of the three farms for their genuine cooperation and provision of adequate information during the study time.

REFERENCES

- Allenstein LC (1981). Reproductive problems in the management of dairy cattle. *Can. Vet. J.* 122:184-188.
- Amene F (2006). Studies on reproductive performance and major reproductive health problems of HF cows at Alage dairy farm. MSc Thesis, Addis Ababa University, Faculty of Veterinary Medicine, Debre Zeit, Ethiopia.
- Arthur GH, Noakes DE, Pearson H (1989). *Veterinary reproduction and Obstetrics*. Theriogenology 6th edition. Baillier Tindal, UK, pp. 83-85.
- Awad HH, Afeify MM, Ayoub MM (1977). Genital discharge in an infertile herd, their causes and treatment. *Egypt Vet. Med. J.* 4:220-229.
- Barnouin J, Chacornac JP (1992). A nutritional risk factor for early metritis in dairy farms in France. *Pre. Vet. Med.* 13:23-27.
- Befekadu U (2007). A field investigation of delayed resumption of postpartum ovarian activity and prolonged postpartum anestrus in cross bred dairy cows in Debre Zeit dairy herds. MSc Thesis, Addis Ababa University, Faculty of Veterinary Medicine, Debre Zeit, Ethiopia.
- Bekana M, Ekman T, Kindahl H (1994a). Ultrasonography of the bovine postpartum uterus with retained fetal membrane. *J. Vet. Med. A.* 41:653-662.
- Bekana M, Ekman T, Kindahl H (1994b). Intrauterine bacterial findings in postpartum cows with retained fetal membrane. *J. Vet. Med. A.* 41:663-670.
- Brannang E, Meskel LB, Schaar J, Swensson C (1980). Breeding activities of the Ethio-Swedish integrated rural development project. Part I: Planning and goals- the multiplier herd system. *World Anim. Rev.* 36:34-36.
- Bretzlaff KN, Whitmore HL, Spahr SL, Ott RS (1982). Incidence and treatment of postpartum reproductive problems in dairy herd. *Theriogenology* 17:527-535.
- Darwo F, Zerbini E (1998). Postpartum reproductive function of F1 cross bred cows under small holder management condition in central high lands of Ethiopia. In: Proceedings of the twelfth proceedings of the Ethiopian Veterinary Association, pp. 60-74.
- Desalegne M (2000). Study on major infertility problems of cross bred dairy herds in Ada'a district. DVM Thesis, Addis Ababa University, Faculty of Veterinary Medicine, DebreZeit, Ethiopia.
- Ebrahim O (2003). Study on major reproductive health problem of small holder dairy farms in and around Kombolcha. DVM, Thesis, Addis Ababa University, Faculty of Veterinary Medicine, Debre Zeit, Ethiopia.
- El-Din AZ, Nokao T, Abdel- Raouf M, Moriyoshi M, Kawata K, Moritus Y (1995). Factors in the resumption of ovarian activity and uterine involution in postpartum dairy cows. *Anim. Reprod. Sci.* 38:203-214.

- Gebremariam T (1996). Survey on major prepartum and postpartum reproductive problems in dairy cattle in Mekelle and its environs. DVM Thesis, Addis Ababa University, Faculty of Veterinary Medicine, Debre Zeit, Ethiopia.
- Hafez ESE (1993). Reproduction in farm animals. 4th ed. Lea and Febiger, Philadelphia, pp. 13-25.
- ILCA (1998): Animal reproduction for African countries. Report of a joint seminar by International Foundation for Science and Swedish International Program on Animal Production. International Livestock Center for Africa, Addis Ababa, Ethiopia.
- Markusfeld O (1984). Factors responsible for post parturient metritis in dairy cattle. UK Vet. Rec. 114:539-542.
- Melkamu T (1999). Major postpartum reproductive problems in Holleta Research station and small holder dairy cattle. DVM Thesis, Addis Ababa University, Faculty of Veterinary Medicine, Debre Zeit, Ethiopia.
- Merga B (1992). Farm animal Obstetrics. Addis Ababa University, Faculty of Veterinary Medicine, Debre Zeit, Ethiopia.
- Micheal K (2003). Major clinical reproductive problem of small holder dairy cows in and around Awassa. DVM Thesis, Addis Ababa University, Faculty of Veterinary Medicine, Debre Zeit, Ethiopia.
- Morrow DA (1980). Current therapy in theriogenology. Diagnosis, treatment and prevention of reproductive diseases in animals. W.B. Saunders Company, Philadelphia.
- Mukasa-Mugerwa E (1989). Review of reproductive performance of female *Bos indicus* (Zebu) cattle. ILCA monograph No.6. ILCA, Addis Ababa, Ethiopia.
- NMSA (2004). National Meteorological Service Agency, Addis Ababa, Ethiopia.
- Noakes DE (1986). Fertility and Obstetrics in cattle. Oxford (UK) Blackwell Sci. Pub. pp. 28-30.
- Paisley LG, Micklesen WD, Anderson PB (1986). Mechanisms and therapy for retained fetal membranes and uterine infections of cows: A review. Theriogenology 25:353-381.
- Peters AR, Ball PJH (1995). Reproduction in cattle. 2nd Ed., Blackwell, Oxford.
- Puntam MR (1986). Problems associated with AI in cattle. In: Howard J.L. Current Veterinary therapy. W.B. Saunders Company, Philadelphia.
- Richard W (1993). Dairying. Tropical Agriculturalist. 1st Ed. Macmillan Press Ltd. Lon. pp. 43-48.
- Robert SJ (1986). Veterinary Obstetrics and genital diseases. Theriogenology 3rd ed. Edwards' Brothers, Inc., Michigan, pp. 48-104.
- Shiferaw Y, Bekana M, Tenhagen BA, Kassa T (2003). Factors affecting reproductive performance of cross bred dairy cows in the central high lands of Ethiopia. Trop. Anim. Health Prod. 37(5):427-441.
- Stevenson JS, Call EP (1988). Reproductive disorders in the peri parturient dairy cows. J. Dairy Sci. 71:2572-2583.
- Tadelech M (2004). Major postpartum reproductive problems of small holder dairy cows in and around Debre Zeit .DVM Thesis, Addis Ababa University, Faculty of Veterinary Medicine, Debre Zeit, Ethiopia.
- Tegegne A (1989). Reproductive development and function in Zebu and cross bred cattle in Ethiopia. PhD Thesis, James Cooks University of the North Queens Land, Australia.
- Tegegne A, Kassa T, Mukasa-Mugerwa E (1995). Aspect of bull production with emphasis on cattle in Ethiopia. In: Proceedings of 3rd National Conference of Ethiopian Society of Animal Production, ESAP, Proceedings, Addis Ababa, Ethiopia pp. 43-55.
- Tekelye B, Kasali OB, Tsion A (1991). Reproductive problems in cross bred cattle in central Ethiopia. Netherlands Anim. Reprod. Sci. 26:41-49.
- Tekelye B, Kasali OB, Gashaw T (1992a). Reproductive problems in indigenous cattle at the Ministry of Agriculture farms in central Ethiopia. Trop. Agric. 69:247-249.
- Tekelye B, Kasali OB, Wudyalew M (1992b). Reproductive problems in indigenous cattle in the Ghibe valley farming population in central Ethiopia. Trop. Agric. 69:327-328.
- Thomas C (1989). A preliminary survey on infertility aspects of selected dairy farms around Addis Ababa. A seminar presented to the orientation course in Tropical Animal and Health Production, Addis Ababa University, Faculty of Veterinary Medicine, Debre Zeit, Ethiopia.
- Wolf DF (1993). Management of the repeat breeder female. In: Howard J.H. Current Veterinary therapy W.B. Saunders Company, Philadelphia. pp. 781-785.
- Zewdu H (1992). Studies on postpartum uterine infection in Zebu and Zebu crosses and the incidence rate of reproductive diseases in Debre Zeit, ILCA herd. DVM Thesis, FVM, AAU, Debre Zeit, Ethiopia.

UPCOMING CONFERENCES

11th International Congress on the Biology of Fish, Edinburgh, Scotland, 3 Aug 2014



International Conference on Coelenterate Biology, Eilat, Isreal, 1 Dec 2013



Conferences and Advert

October 2013

11th World Conference on Animal Production, Beijing, China, 15 Oct 2013

September 2013

International Conference on Optimizing Productivity of Ruminants,
Poultry, Rabbits and Fishes, Marsa Alam, Egypt, 2 Sep 2013

Journal of Veterinary Medicine and Animal Health

Related Journals Published by Academic Journals

- *Journal of Parasitology and Vector Biology*
- *Journal of Cell Biology and Genetics*
- *Journal of Infectious Diseases and Immunity*
- *Journal of Public Health and Epidemiology
Medical Case Studies*
- *Journal of Medical Laboratory and Diagnosis*
- *Journal of Clinical Virology Research* ■ *Medical
Case Studies*

academicJournals